

NEXT MEETING (REGULAR LOCATION, see page 7): Tuesday, Nov. 1, 6:30PM (Meeting begins at 7:00)

PROGRAM: Jim Terry will be demonstrating how he makes tiny goblets. He'll be using our big lathe!

NEXT MEETING: ANNUAL HOLIDAY DINNER

DATE AND TIME TO BE ARRANGED. We are shooting for Tuesday, Dec. 6.

PROJECTS OF THE MONTH:

November – Your largest or smallest piece

NOTE FROM THE PRESIDENT: Don't forget the NC Woodturning Symposium, Nov. 5-6, Statesville Civic Center, Statesville, NC. The demonstration schedule is on the last page of this newsletter.

Thanks to Bob Moffett for working with 2ArtChics to provide our club members an opportunity to show and sell their work!

Thanks to Lan Brady for his excellent descriptions of our demonstrations this year.

I have appointed a nominating committee to recruit a slate of nominations for officers of our Chapter. They are Jim Barbour (336-584-4228), James Yarbrough (336-723-8391), and Vicki Tanner (336-449-0767). If you want to suggest nominations, please contact one of them ASAP.

Membership dues are due.

– Bob Muir

PTWA Meeting Notes of Oct 4, 2005

- President Bob Muir opened the meeting at 7:00pm
- We had 54 people present
- Our program Chair (Jim Barbour) updated everyone concerning upcoming meetings. Jim Terry will be turning miniatures in Nov. Christmas party in Dec.
- The NC Turning competition will be hosted by Klingspor, October 28-29
- Remember the North Carolina Wood Turners Symposium on November 5-6
It would be great if we could win the Lathe, with the new rules we stand a good chance if we turn the tops like we did last year!!!
- A couple of turning problems were presented with great solutions offer for each
- Our Instant Gallery was presented by Phil Adkins with Mike Evans photographing
- Our local Woodcraft Store honored the club with a customer appreciation night on Friday Oct 8. I hope everyone took advantage of the discounts. I know. I did!
- Don't forget membership renewal. The annual dues are \$24.00. It is the cheapest education you will ever receive.
- Roy Fisher is drafting a membership directory for future approval
- Several national wood turners are doing their part to assist Hurricane victims. Auctions of famous turners pieces have been sold on Wood Central and others will be offered on e-bay in the near future.

Our demo this month was a challenge to your creativity. We were honored to have our very own Vicki Tanner from Whitsett presenting embellishments with color, texture and pyrographics.

Vicki began turning about 5 years ago. She has been experimenting with Finish embellishments about 2 years now. If you thought you were going to see a copy of other artist like Andi Wolfe or Molly Winton, you would have been mistaken. Vicki has created techniques that are "Original Vicki". Her interest in the format was motivated by the need for some quiet time while still working with wood. She pursued her interest by taking a class at Brasstown. She looks for inspiration in things like quilting patterns.

Although she assured us you do not need to be an artist, it does require an eye for beauty in some non-traditional ways.



Vicki Tanner during her demonstration

We began the evening by viewing some of her leaf patterns that have been taken from nature, textbooks and even a kids coloring book. She then develops a pattern on a grid so that she can transpose into any size needed.

While emphasizing that you should not use serrated leaves, due to loss of detail, she was setting up a dark and light sheet of paper to cut identical leaves. Once cut, you can take the dark pattern and shift it around under the light pattern until you get the desired amount of shadow you would like to see. (A great artistic hint was given-) When using multiple leaves in a pattern, make sure that all shadows represent the light source in the same place.

As her Detail Master III (pyrographic tool) was warming up, she demo'ed several of the different tip that are used in her work. Vicki lays out the leaves on top of graphite paper for tracing. (Another hint: graphite paper is better than carbon paper. It does not smear and is erasable). Both, the feature pattern and the shadow pattern are traced. We learned that you adjust the heat on the pen so that you are creating a fine detail line and not trying to set off the smoke alarm. The next great tip was her pyrographic pen. Vicki has recycled a Sonic® Styrofoam cup as the insulation on her pen.

She pointed out that you should practice on scrap wood before putting your burning tools to a 3 hour turned bowl. Then she pretended to make a mistake so we could see how to correct a mistake with a detail rotary sander. The sander did a great job at removing very finite amount of the wood/ pencil mark. She pointed out that #5 pencil might be best for tracing; softer lead does not mark the wood. Also, at her disposal, is a vinyl eraser, which cuts down on the mess.

After burning the leaf and shadow into the piece, it is time for color. She began in the darker shadow area. Vicki uses a mixture of texture and color. Many texturing possibilities were shown. You can shadow with the pyro pen, or an engraving tool, or a dremel tool or even a sharpened piece of thick wire. Next, color was applied in one of many ways. It can be as simple as a black sharpie pen, but the best tool was a cotton swab to apply color. With the swab, Vicki applied color using stain, dye, and/or acrylic paint. Her tools for this task were endless.

I thought we had seen all the possible ways to color wood, but Vicki was just getting started. In addition to coloring with dyes, stains or paints, we now see Prisma Color pens are added. They come in many different colors and can be combined to create many more blended colors. She mentioned the use of an airbrush, but for those that do not want to make that investment, she has found a blo brush that works great for this process. These could be found at craft stores or even toy stores. If you prefer more vivid, strong color, stains are the way to go. Using a cotton swab, she Orange stained a leaf that that any Tennessee Volunteer would be proud to own!

Several members of the group expressed questions about the pyrographics, so Vicki was kind enough to show further details. She used a paper pattern and burned directly through it. Any missed spots can be cleaned up later. If interested in furthering your skills in pyrography, she suggests a book by Al Chapman as a great starter.

Vicki has also ventured into the world of Chip carving. You need only one tool for this process. All the cuts can be achieved by holding the blade at an angle or by stabbing to make “V” notches. This tool needs to be sharp enough to cut through a London Fog. Vicki protects the tool edge by making a cover from “tool handle dip”. About 4-5 coats make a great cover. Don’t forget to spray the blade with WD-40 before the first dip or your next job will be “How do I get the cover off?” Anyhow, if you would like to further your skills, a book by Wayne Burton will be in your future.

Vicki concluded the demo by showing some of her ongoing experimental pieces. The first was a carved spiral scallop bowl. She made an interesting observation that we all seem to follow but fail to put into words. She stated, “this piece was not finished, but it was done!” Next we discovered Vicki’s use of non-traditional wood turning tools were second to none, except for maybe Earl. She has a bowl that spent some time in a sand blast cabinet and was exposed to glass beading. It gives a kind of seashell appearance noted by someone in the front row!

Thanks to Vicki for sharing her knowledge of embellishments. It will definitely shorten the learning curve for many of us.

- We concluded the meeting with our raffle conducted by our new Treasurer Gene Briggs.
Respectfully submitted, Lan Brady

Treasurer’s Report:

Beginning Balance (Oct. 1, 2005)	\$	1879.57
Income:		
Library	\$	24.00
Raffle	\$	103.00
Dues	\$	600.00
Total Income	\$	727.00
Expenses:		
Raffle tickets	\$	15.81
October Newsletter	\$	65.60
DVD, Beth Ireland for Library	\$	30.00
Total Expenses	\$	111.41
Ending Balance (Oct. 24, 2005)	\$	2495.16

CLUB DUES ARE DUE: See the Renewal/Application form at the end of this newsletter. Bring your dues to the October meeting and give them to Gene Briggs or mail them to him.

INSTANT GALLERY: As soon as you bring your piece in, find the sheet to record your name and information about the piece, and put the ID sticker on your piece.

Having woodturning problems? If you would like to bring pieces that you want help with (but don’t necessarily want to put in the gallery), bring them to our meetings and we’ll provide an opportunity to share your concerns and to receive suggestions.

The 2ArtChics Show:

Hello Everybody,

I have some new great news concerning the 2 Art Chicks show in November.

I met with Judy Kastner at 2 Art Chicks the other day and we decided that due to the number of participants in the event, there will be no limitation on the number of pieces of work that you can bring to the show. If you finish some pieces after the show begins you can still bring them to be displayed, just remember to add them to your inventory sheet. Depending on space available, they may not display all pieces initially, but keep some for back up to restock the display as items are sold.

In order to keep track of everyone’s inventory better she recommended that each person fill out an inventory sheet listing the pieces that they brought. She also recommended that we put some type of tag on our work that would correspond to the inventory sheet number and also list the type of wood the piece is made of on the tag. The

inventory number should be specific to you, for example, I am using my initial and a number, i.e. RWM-1. If you do small items such as pens, lamp pulls or bottle stoppers, each will need a separate tag or sticker one each one, but you can list it as one item on the inventory sheet and use one inventory number. If you think of some items I should have put on it that I didn’t, please let me know. Based on her recommendations, I am making an inventory sheet for everyone to use. I will attach one to this mailing and have some available at the November and by email or regular mail upon request. They will also be available when we check in our items.

The Club is providing black sheets for covering the display tables. Judy said that the black color would be good for accenting our work.

If you have display tables, pedestals, racks, etc. that you would like to use I would appreciate it if you would bring them. Also, if you do small items such as pens, lamp pulls or bottles stoppers and have a display rack for them, it would be nice to be able to use that. If you are able to bring display fixtures, please put your name on them so there won’t be any confusion regarding whose they are.

We will be setting up the show on Wednesday, November 16th from 1:00 – 6:00. Any and all help will be appreciated. Both my wife and I will be there helping with the setup. Pick up of items in the show will be Sunday afternoon November 27th. If you want to display items after the show, they will have to go through the jury process and then regular commission will be charged. Based on the quality work that I have seen in the Instant Gallery each month, I believe the jury process will be a positive event for all of our members.

Remember participation in this event is open to all members of the Club. The more people that participate, the better response we will have. This is a good event for gaining individual as well as club recognition. I also think this will be a lot of fun for all of us.

Anyone who does not chose to participate in the sale portion of the show is more than welcome to attend the show and the related events.

More details on related events later.

See you there, Bob Moffett

North Carolina Woodturning Show and Competition 2005:

Show: Friday, October 28th, 9:00 am to 6:00 pm & Saturday October 29th, 9:00 am to 4:00 pm

Tops for Tots:

Again this year, we are asking turners to make and bring tops. All tops will be given to children at local hospitals, rehab groups, children’s homes, etc. This is your chance to give back to the community and make a child smile! **(No CD tops please, breakage is a problem.)**

The chapter that makes the most tops per member will receive the prize of a Delta Midi Lathe. We will use a very simple formula: Number of tops divided by the number of members = TPM (Tops per Member), i.e., Chapter “A” with 20 members bringing in 100 tops will have a TPM = 5, Chapter “B” with 120 members bringing in 410 tops will have a TPM = 3.42. Chapter “A” will win! **In all cases, the children are the real winners! Lets make tops!**

OTHER WOODTURNING SHOWS/SYMPOSIA:

- **North Carolina Woodturners Symposium**, Saturday & Sunday, November 5-6, Statesville Civic Center, Statesville, NC
- Blue Mountains International Woodturning Symposium to be held Emu Heights (approx 60kms west of Sydney) Australia on 29-30th October.
- Desert Woodturning Roundup Symposium to be held February 18 and 19, 2006 in Mesa, Arizona.
<http://www.desertwoodturningroundup.com>

We invite all woodturners to attend this symposium. There will be 10 nationally and internationally known turners at this 2-day event. We will have an instant gallery, vendors, raffle, hands-on, banquet, demos, lectures and great Arizona weather. To help offset early expenses, we ask if you could please send in your registration made out to Arizona Woodturners association as soon as possible.

Tops for St. Jude's Childrens' Hospital: Since one of our members has a relative under treatment at St. Jude's, it has been suggested that it is appropriate that we collect tops (and other handmade toys) for patients there as well as for the North Carolina Woodturning Show and Competition.

CONSIDERATIONS REGARDING TOPS FOR TOTS: A general guideline is to ask yourself "Do I want my child or grandchild to play unsupervised with this top?" Answers should be based on considering the risks of choking on the top as a whole or if it were to break apart, toxicity of the wood and/or finish, etc.

Newsletter via email: A few members have requested that they receive the newsletter by way of email. If others wish to do so, please send Bob Muir (rmuir2@triad.rr.com) an email to make the request.

An opportunity & offer from Chet Greathouse: We encourage your patriotism and participation to join with your fellow woodworkers and artisans here in the Piedmont Triad area. Here's how: **The Freedom Pen Project**

The Woodcraft Store in Greensboro invites you to participate in a nation-wide project to turn hand made wood pens for our men and

women in uniform overseas. We have seven lathes, equipment, tools, materials and a classroom instructor to assist you in turning, finishing, and assembling as many Slim Line Pens as you would like. These must be individually wrapped and will be forwarded to our troops for distribution. Our goal is to complete 10,000 pens by the Veterans Day weekend.

We invite you to participate now through Veterans Day, November 11, at the Woodcraft Store next to CompUSA just outside the Four Seasons Mall. We will make a special push on Friday and Saturday November 11 & 12 and hope to enlist veterans, the VFW, American Legion, local recruiters, and even scout troops to participate and spread the word about this worthwhile program.

Please call for more information and to schedule your participation at the Woodcraft store 336-235-0900. If you have any suggestions as to how you or your group can support this effort, please call us.

We will have kits available for woodturners who want to make the pens at home on their own equipment. I hope the Association can help with this event.

Chet Greathouse, Owner & Operator, Chris DeLong, Store Manager, 504 Four Seasons Town Center, Greensboro NC, 27407, 336-235-0900

PHOTOS FROM OCTOBER INSTANT GALLERY

Photos are courtesy of Mike Evans. You can see the color versions by going to the newsletter section of our website or by visiting the website at <http://albums.photo.epson.com/j/AlbumIndex?u=4331334&a=31919143&f=>.



Bob Moffett dyed maple and walnut ornament



Bob Moffett Polynesian palm nut and walnut ornament



Glenn Marceil purpleheart, holly, wenge, ebony genie bottle



Butch Hadley's mahogany tops for tots



Roy Fischer maple bowl



Gene Briggs salvaged bowl for Roy



Earl Kennedy's enormous walnut goblet with captured ring - Next time make it natural edge



Joe Schneider maple bowl



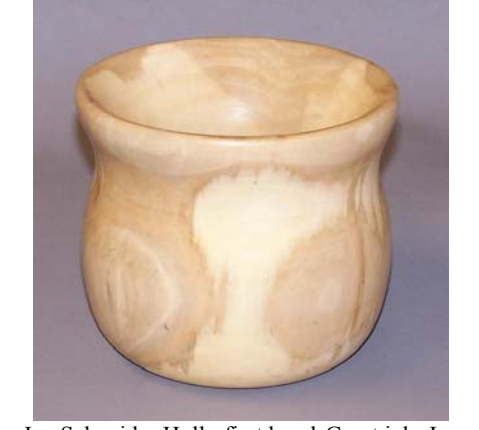
Jim Barbour walnut goblets



Jim Duxbury mahogany top



Jimmy Tuttle natural edge cherry bowl with cherry stand



Joe Schneider Holly first bowl-Great job, Joe



Lan Brady's ingenious epoxy denim ornaments



John Morris pine walnut closed segmented vessel



John Morris poplar open segmented jug



Mike Evans this one was very punky and needed lots of CA



Mike Evans boxelder



Mike Evans boxelder turned fresh off the tree



Earl Kennedy spalted maple with inlay



Phil Atkins wall pieces (turn one, cut in half to get two!)



Mike Evans gray streaks are evidence of that his boxelder sat on the ground in the sun two months



Cutting tool type A texturing tool by Barry Reeves in Miami Fl



Vicki Tanner dyed and beaded maple bowl



Vicki Tanner Maple burl earrings and pendant



Vicki Tanner maple bowl



Vicki Tanner another maple bowl



Vicki Tanner walnut platter

UPCOMING WOODTURNING CLUB MEETINGS AND DEMONSTRATIONS:

<p>Piedmont Triad Woodturners Association First Tuesday, 7 p.m., Leonard Recreation Center, Greensboro</p> <p>November 1 – Jim Terry, miniature goblets December – Annual Holiday Dinner</p> <p>http://www.piedmontcommunities.us/go/ptwa</p>	<p>Woodturners Guild of North Carolina Second Thursday, 7pm??, NCSU Craft Center</p> <p>Demonstration schedule unknown to this editor.</p> <p>http://www.woodturnersguild.com/</p>
<p>North Carolina Woodturners Second Saturday, Woodworking Shop, Hickory, NC. Usually 1 PM (sometimes 10-4)</p> <p>Nov 5-6 – NC Woodturners Symposium Dec Holiday Festival</p> <p>http://www.geocities.com/nc_woodturners/</p>	<p>Carolina Mountain Woodturners Third Saturday at Folk Art Center (near Asheville) Blue Ridge Parkway just South of mile marker 382. 10AM – 4PM.</p> <p>Nov – Clay Foster, Texas Dec - Myron Curtis, Virginia</p> <p>http://www.carolinamountainwoodturners.org/</p>

Chapter officers:

<p>Bob Muir, President 4214 Stonehenge Rd. Greensboro, NC 27406 336-638-6012 rmuir2@triad.rr.com</p>	<p>Bob Moffett, VP 2416 Wimbledon Circle Burlington, NC 27215 336-229-6141 bobm@netpath.net</p>	<p>Lan Brady, Secretary 5202 Ashworth Road Greensboro, NC 27405 336-621-6783 lan.brady@mail.cone.com</p>	<p>Gene Briggs, Treasurer 1831 Squire Davis Road, Kernersville, NC 27284 (336) 869-4584 n4qbt@prodigy.net</p>
<p>Butch Hadley, Member at Large 3400 Myrawood Dr. Greensboro, NC 27406 336-697-9570</p>	<p>Jim Barbour, Prog Chair (ex officio) 3324 Osceola Road Elon, NC 27244 336-584-4228 jim-barbour@triad.rr.com</p>	<p>Chet Greathouse, NL Ed. (ex officio) 5002 Northbend Road McCleansville, NC 27301 336-235-0900 ckgreat@aol.com</p>	

INTERESTING WEB SITES

<http://www.piedmontcommunities.us/go/ptwa> **OUR CHAPTER'S WEB SITE**

<http://www.woodturner.org/> **THE AMERICAN ASSOCIATION OF WOODTURNERS**

AAW Galleries base page: <http://www.woodturner.org/gallery/>

AAW Members' gallery page: <http://www.woodturner.org/photopost/index.php>

AAW Members' forum: <http://www.woodturner.org/vbforum/forumdisplay.php?f=2>

AAW Members' e-mail discussion list info: <http://www.woodturner.org/community/discussion.cfm>

AAW products (videos, logo items, etc.): <http://www.woodturner.org/products/>

AAW 2005 Symposium (Overland Park, Kansas) report: <http://www.woodturner.org/sym/sym2005/symresults.htm>

Klingspor's woodworking shop web site: <http://www.woodworkingshop.com/>

Woodcraft Supply website: <http://www.woodcraft.com/>

Greensboro Woodcraft store's website: <http://www.woodcraft.com/stores/store.aspx?id=554>

Craft Supplies USA The Woodturners Catalog website: <http://www.woodturnerscatalog.com/>

Rockler Woodworking & Hardware website: <http://www.rockler.com>

TURNING TOPS: Here are some web links that show a variety of different top designs:

<http://www.spinning-top.de/>

<http://www.m.ehime-u.ac.jp/~tateishi/Tops/tops/alltops01.html>

<http://sandstrum.com/MYCOLLECT.HTML>

http://www.spinningtop.de/spinning_top/spinning_top.html

<http://www.toycrafter.com/tops/fingertops.htm>

<http://www.toycrafter.com/tops/flips.htm>

Website of Wood magazine: <http://www.woodmagazine.com/>

Russ Fairfield's web site: <http://www.woodturnerruss.com/>

Christian Burchard's web site (VERY DIFFERENT!): <http://www.burchardstudio.com/>

Russ Fairfield's "How to turn a pen tutorial": <http://www.woodturnerruss.com/Pen10.html>

Ken Grunke's inside-out turning how-to: <http://www.crwoodturner.com/ornaments/ornaments.pdf>

Kenn Osborne's "How to make a segmented pen tutorial": <http://www.penturners.org/content/segpen.pdf>

Ed Davidson's "How to turn a cigar pen tutorial": <http://www.penturners.org/content/CigarPenInstructions.pdf>

Jay Pickens' "How to cast polyester resin pen blanks": http://www.penturners.org/content/PR_Instructions.pdf

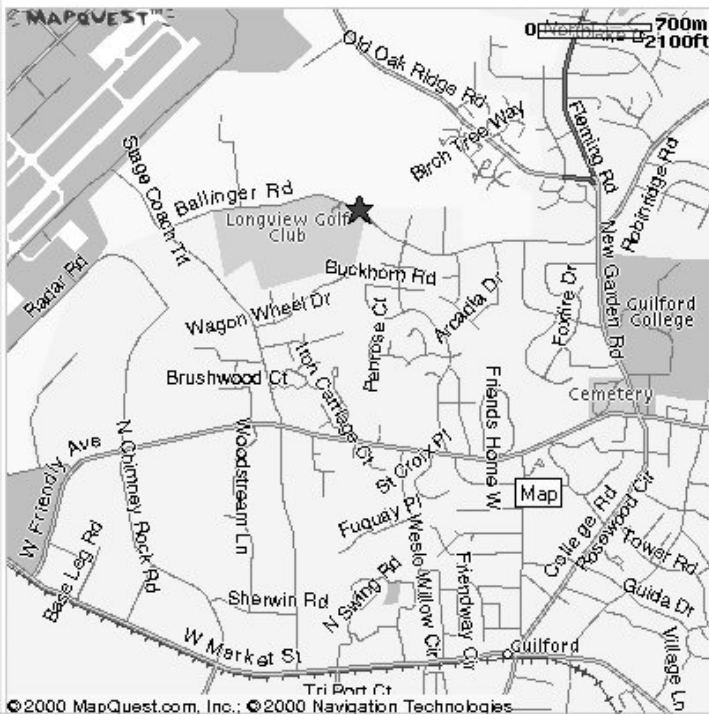
Source for epoxy and polyester resins: <http://www.artstuf.com/>

Arts and Crafts supplies: <http://www.craftsetc.com/> also see <http://www.MisterArt.com/>

SEND YOUR FAVORITE WEBSITES TO BOB MUIR FOR INCLUSION IN THE NEWSLETTER.

MEETING LOCATION

★ 6324 Ballinger Road, Greensboro, NC 27410-9062



DRIVING DIRECTIONS

To the Leonard Recreation Center
 Phone: (336) 297-4889
 Some of the signage is confusing, so be careful.
 The Longview Golf Club no longer exists!

FROM WEST OF GREENSBORO

1. Take I-40 E.
2. Take exit number 213.
3. Turn RIGHT onto GUILFORD COLLEGE RD.
4. GUILFORD COLLEGE RD becomes COLLEGE RD.
5. COLLEGE RD becomes NEW GARDEN RD.
6. Turn SHARP LEFT onto BALLINGER RD.
7. Leonard Recreation Center is about 1 mile on the right.

FROM EAST OF GREENSBORO

1. Take I-85 S/I-40 W/US-29 S.
2. Take the I-40 WEST/US-220 SOUTH exit, exit number 123, towards WINSTON-SALEM (US-421 N).
3. Merge onto I-40 W/US-220 S.
4. Stay straight to go onto I-40 W.
5. Take the exit number 213.
6. Keep RIGHT at the fork in the ramp.
7. Merge onto GUILFORD COLLEGE RD.
8. GUILFORD COLLEGE RD becomes COLLEGE RD.
9. COLLEGE RD becomes NEW GARDEN RD.
10. Turn SHARP LEFT onto BALLINGER RD.
11. Leonard Recreation Center is about 1 mile on the right.

“An accident at the lathe can happen with blinding suddenness; respiratory problems can build over years. Take appropriate precautions when you turn. Safety guidelines are published in the AAW Resource Directory. Following them will help ensure that you can continue to enjoy woodturning.

From American Woodturner

**Dues Renewal or Application for Membership
 Piedmont Triad Woodturners Association**

Date _____

Name _____ Phone _____ (Home)

Address _____ Phone _____ (Work)

_____ E Mail _____

_____ AAW membership No. _____

Membership Fee: \$24.00 per year. Dues paid In October each year. We prorate dues if you are joining at other times of the year.
 Oct/Nov/Dec \$24.00; Jan/Feb/Mar \$18.00; Apr/May/Jun \$12.00; Jul/Aug/Sep \$6.00.

Please make check payable to Piedmont Triad Woodturners Association.
 Mail to: Gene Briggs, Treas., 1831 Squire Davis Road, Kernersville, NC 27284

Carolina Woodturning Symposium Schedule 2005

Saturday, November 5

Time	Room A	Room B	Room D	Room E
10:30-12:00 Registration				
1:00 – 3:00	Matt Birchfield Turning a Translucent Wooden Lampshade	Myron Curtis & Alan Leland Architectural & Find Detail Turning: Dueling spindle turners	Jim McPhail Design, preparation & turning a layered bowl	Sam McDowell Turning green wood from start to finish
3:00 – 3:30	Break	Break	Break	Break
3:30 – 5:30	Don Olsen Various ways to turn crotches	Darren Gozy Turning an egg box & gilding it	Charles Nall, Jr. Turning a three dimensional canvass	Greg Wilson Beginning Penturning
5:30 PM Informal Open House (BYOB) at Sam McDowell' home off Highway 21 in town. Snacks & some Bar-B-Que				

Sunday, November 6

Time	Room A	Room B	Room D	Room E
9:00 – 11:00	Don Olsen Various ways to turn crotches	Myron Curtis & Alan Leland Architectural & Find Detail Turning: Dueling spindle turners	Joe Ruminski Learning to make Hollow forms the safe & easy way	Mark Kauder Segmented Bowl Turning Made Simple I
11:00 – 11:30	Break	Break	Break	Break
11:30 – 1:30	Matt Birchfield Turning a Translucent Wooden Lampshade	Joe Ruminski Eight projects in 2 hours	Jim McPhail Design, preparation & turning a layered bowl	Mark Kauder Segmented Bowl Turning Made Simple II
1:30 – 2:15 Lunch				
2:15 – 4:15	Darren Gozy Turning an egg box & gilding it	Greg Wilson Advanced Penturning: Move from “ho-hum” to “eyecatcher”	Charles Nall, Jr. Using a three dimensional canvass, pyrography & coloring	Sam McDowell Turning green wood from start to finish