



Piedmont Triad Woodturners Association



www.woodturner.org

Newsletter

May 2009

Next Meeting:

May 12th – Steve Ainsworth – Turning Pewter

Future Demonstrators:

June 9th - Mike Stafford – Turning Boxes

July – Outing at Steve Wall Lumber

August – John Morris – Segmented Construction

September – Jim Terry – Beaded Detail

Message from the President:

Hello Everyone,

I hope each of you enjoyed Lan Brady's demo on multi-axis scoops. We appreciate him filling in for Red Saunders who is out with shoulder problems. His demo was very interesting and I think we all learned some new techniques and skills that we can use in our future turnings.



We had some interesting pieces in the monthly turning challenge this past month. Our challenge shows that a lot of creative thinking is going on in our club. It should be fun to see the tops in next months challenge. Keep up the good work!

The turning challenge for this month - Spinning Tops. The design is entirely up to you. If we have time we might have a spin off either before or after the meeting.

Turning challenge for June – Turn a box. It can be as big as you want or as small as you want it to be. There are no limitations other than it must be

turned, but it can have carving or any other features you want to put on it.

Thanks to those who attended the kaleidoscope breakout session at Jim Duxbury's for bringing in their kaleidoscopes for all of us to see. They all did a really good job and, from what I understand, had a good time doing it.

Please bring your **two** best tunings for display in the Instant Gallery and one item for the Monthly Turning Challenge. Limiting your entries to **two** items for the Instant Gallery and one item for the Turning Challenge gives us more time to admire them and more time for the demonstration. We have a really fantastic Instant Gallery so let's all keep up the good work.

Our demonstrator for the May meeting, Steve Ainsworth, will demonstrate how to turn pewter. It should be real interesting. I will be on vacation and will not attend the meeting, but I'm sure it will be an interesting demonstration. I will have to check out the DVD to see this one.

We had one of our best Raffles ever this past month. Let's do the same thing this month. Be sure to bring something for the monthly Raffle. It can be wood, old Woodturning and Woodworking magazines, old tools that you don't use anymore or whatever you think other members would enjoy winning. Our Raffle is one of the ways that we raise money to support the club and is something in which everyone can participate. Don't forget about the special ticket price of 60 tickets for only \$50.

For all of those who are interested in participating in the June 10th workshop on boxes led by Mike Stafford, please let Jim

Duxbury know at the May meeting. We will have a drawing from the list of people who have signed up to determine who will attend the workshop. There are only 8 slots and we have had more people than that sign up. The cost for the workshop will be \$50.

Participants must pay in advance---there will be no paying at the door. If you are selected, you will be notified what to bring to the workshop. This is not a beginning turning workshop. Mike will teach turning boxes, but you will need to have basic turning skills.

Remember to see Bob Holtje to get one ticket for bringing items to the gallery and one for bring items to the raffle for the year end raffle. When you decide to do a demo, Bob will give you five tickets for the year end raffle.

Bob Holtje did a great job on bulk purchase of CA glue. We sold almost half of the glue that he purchased. Since this was such a success, we will probably expand it to other items in the future. If you are interested in getting some of the remaining CA glue before it is all sold out see Bob at the next meeting. If you have some ideas about items that you think would be good items for the Club Bulk Purchase program, please let Bob Holtje know at the next meeting.

An inventory of our library materials has been taken and many new items have been added to the collection. In order for the library to grow, we need all members to contribute the requested rental fee for items and also to return items on time. With the monies from rentals, we will continue to purchase new items to enhance our collection, particularly professional DVDs. Any items checked out need to be returned the following month so other people can use them. If you have any books, VHS tapes or DVDs that you aren't using any more, please consider donating them to the library so that others may enjoy them.

We are always looking for ways to improve our club. We have made several changes in the past year that I hope have benefited the club and its members. We would like 2009 to be our best year ever. Please let any Board

Member know what you think we can or should do that we aren't doing to improve the club for all members. If you would, please contact a Board member at the meeting and follow up with an email, letter or phone call after the meeting. If you want to contribute some of your talents to the club, contact any Officer or Board Member. This club belongs to all of us and working together we can all make it better and more fun.

Save the date of July 18^h, Saturday for the Annual Club outing - this year hosted by The Masons along with a field trip to Wall Lumber.

The May meeting will be on May 12th. I will not be able to attend this meeting but **John Morris will be filling in for me.** I'll see you at the June meeting,

Bob



Our New Setup in the Gym



A Large Raffle



The Instant Gallery

Minutes of April Meeting:

The meeting was opened by Bob Moffett, Pres.

There was a report from Jim Duxbury and the participants in the Kaleidoscope breakout session. Everyone had a good time and three people brought in their kaleidoscopes for the gallery.

Bob Moffett announced that we will be having a box workshop June 10th led by Mike Stafford. It will be all day Wednesday, June 10th at the Leonard Rec. Center and the cost will be \$50. A signup sheet was passed around at the meeting. Anyone interested in signing up for the workshop, please contact Jim Duxbury. If more people sign up than Mike can handle, a drawing will be held at the May meeting to determine who will be able to attend.

Bob Moffett gave a report about the 2010 show at the Gregg Museum. All applicants pictures have been received and the Museum will send emails to the ones that are selected as soon as the selection is made.

Southern States Symposium is April 24 – 26, 2009 in Gainesville, Ga.

N.C. Symposium will be October 23 – 25, 2009 in Greensboro, N.C. Plan to be there!

Change in Club Dues and Club Year were voted on and accepted by the majority of the members attending the meeting. For 2009 club dues will remain the same but will be in effect until December 2009. Starting in January 2010 club dues will be \$30 per single member and \$45 per couple. Also starting in January 2010, the club year will run from January to December.

It was announced that Lan Brady was appointed by the Board to be our second Member-at-Large.

Bob Holte gave the Treasurers Report.

Bob Holte, our Treasurer, did a club bulk purchase of CA glue for the club. You can buy CA glue through the club for \$4.50 per 2 oz. bottle. The retail price is \$6.95 per bottle.

Doc Green led the raffle. We had a large raffle this meeting.

Lan Brady did an excellent demo of multi-axis scoops.

He used a spindle gouge that he had made out of an extra roughing gouge that he had, making coves and beads and finally using it as a scraper for his finishing cuts on the scoop.

He turned the handle on a multi-axis, using a cup center in his tail stock. He moved the point of the cup center to the circle made by the cup to get the amount of offset that he needed.

He had to slow the lathe speed down considerably when he was making the handle as much of the time he was cutting air.

He also cut a bead in the top of the handle where it joined the scoop.

On several of his scoops he also cut finger grips. He did this by offsetting the end of the handle in the cup center one more time to the outer edge of the circle left by the cup.

He then cut the ends of the scoop off with a Japanese saw, cutting it at an angle so that the scoop and handle ends remained round and then sanded the nubs off.

He mounted the scoop in his homemade chuck made from plastic pipe reducers and a screw clamp and hollowed out the scoop.

It was a very good demonstration.

The meeting ended about 9:40.

Respectfully submitted,

Bob Moffett



Southern States Symposium:

This Past weekend (April 24-26), Bob Moffett and I attend the SS Symposium in Gainesville GA. It is about a 4 hour road trip from Greensboro. But it is 4 lanes all the way!

It began at noon on Friday and ended at noon on Sunday. It is held in the Georgia Mountain Convention Center, Downtown. The Center is an easy walk to several hotels and restaurants.

The vendor area was well equipped with tools, wood and other related woodturning items. Most of the tool vendors were giving 10-20% discounts. Some wood vendors had rare exotic woods and others had inexpensively priced local woods.

The instant gallery was very inviting. It was in a well lit foyer of the GM Center. You had lots of natural lights to view the pieces. Also the auction pieces and prizes were available for close inspection.

The demos were a great cross section of basic skill building, on up to very artsy venues. They even had one session on building and using "The Phrugal Photo Studio". It was a great help. Anyhow, 5 training sessions were in the rotation continuously. It was the usual mix of professional and local turners. But the advantage is the quality of local turners. The local guys are Nick Cook, Don Russell, and Bobby Clements, just to name a few.

If there was a negative, it was the acoustics. It is a large concrete and steel structure. They overcame the problems and you had no trouble hearing any of the demos.

The Saturday evening meal and auction was well attended. John Hill led the fast paced and well structured auction. Quite a variety of items were sold. A starter pack of Niles Bottle stoppers brought 45 dollars on up to a John Jordan Hollow form at 750 dollars. The most interest was for a variety of Weed Pots by a local artist. Each bringing from 50 to 150 dollars.

If you are looking for a great Woodturning weekend next April, I highly recommend Southern States Symposium.

Lan Brady

"More Woodturning" Publication:

Promotional offer to the PTWA by "MORE WOODTURNING":

Fred Holder, Editor and Publisher of More Woodturning magazine sent us an offer to donate a CD-ROM (\$95 value) that contains all issues published to date, if 10 or more of our members subscribe (two CD-ROMs if 20 subscribe) to his magazine. The subscription price is \$35 for hard copy and \$25 for the electronic version (sent via email in PDF format). Some PTWA members already subscribe. The offer applies to new and renewal subscriptions. There will be a subscription form at the May 12 meeting. See <http://www.morewoodturning.net/woodturn.htm>.

The March-April 2009 issue consisted of 40 pages. The Table of Contents: *Eli Avisera: A Different Approach*, *Sweazey Gouges to Continue in Production*, *Sphere Template*, *PenTurner's Corner*, *Letter to Editor*, *Feilding Collaboration 2009*, *Questions and Answers from the Internet*, *Using a Depth Drill*, *Spinner Tops*, *A Spigot Chuck You Can Make*, *Johannes Michelsen-The Hat Man*, *More About Through Chucks*, *Coming Events*, *Making the Ball for a Chinese Ball*, *Insurance Coverage for AAW Members*, *More On Rolling Pins & a Couple New Tricks*, *A Collaborative Group Project*, *The Market Place*.

Upcoming Events:

Carolina Mountain Woodturners May - J. Paul Fennel; June – Beth Ireland; July – Avelino Samuel; August – Art Liestman

North Carolina Woodturners May – Phil Colson; June – Beth Ireland; July – Don Olson; August – John Jordan

Turning Southern StyleXV The Georgia Association of Woodturners (GAW) symposium will again be held at the Unicoi State Park and Lodge near Helen, Georgia on September 18-20, 2009.

<http://www.gawoodturner.org>

North Carolina Woodturning Symposium Our North Carolina symposium will be held at the Greensboro Coliseum

October 23 – 25.

<http://northcarolinawoodturning.com/>

Our July Meeting:

Thanks to Lisa and Ralph Mason for setting up our July meeting. It will be a **Saturday (July 18th)** meeting at Steve Wall Lumber in Mayodan. For those who have not been up to Steve's, he carries a large selection of hardwoods including exotics and turning blanks. I am sure this will be a great day. We will get out more later on the events planned

for the day, times and directions. Check out Steve's website at:

<http://www.walllumber.com/>

CA Glue:

We still have some of the Starbond CA glue that we ordered for sale. Bob Holtje will have it at the meeting. We have thin, medium and thick for \$4.50 and also accelerator for \$3.00. See Bob at the meeting.

PHOTOS FROM APRIL INSTANT GALLERY

WHEN YOU BRING ITEMS FOR THE GALLERY, PLEASE LOG IT IN SO WE CAN PROPERLY ASSIGN CREDIT.

Photos by Bill Voss. All photos are the property of PTWA and the individual woodturner. You can see the color versions by going to the On-Line Newsletter and the Instant Gallery on our website <http://www.ptwoodturners.org>



Tony Kahn – Cherry Hollow Form



Tony Kahn – Honey Locust Hollow Form



Bruce Schneeman – Oak Platter



Bruce Schneeman – Maple Bowl



John Morris – Maple 3-Layer Bowl



Jjohn Morris - Wine Stoppers with State Quarter Cabochons



Jim Terry – Cedar Natural Edge Bowl



Jim Terry – Maple Burl Hollow Form



Edgar Ingram – Apple Small Bowl



Edgar Ingram – Oak Burl Natural Edge Bowl



Jim Yarbrough – Osage Orange Bowl



Jim Yarbrough – Dogwood Root Pen



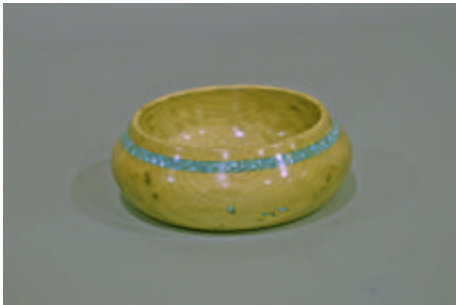
Jeff Clark – Maple Bowl



Jeff Clark – Walnut Open-Segment



George Sudermann – Maple/Turquoise Candy Dish



George Sudermann – Myrtlewood/Turquoise Candy Dish



Clyde Mosley – Maple Rolling Pin



Joe Schnieder - Closed Segment Vase



Tim Smith – Red Oak Wine Bottle Coaster & Bowl



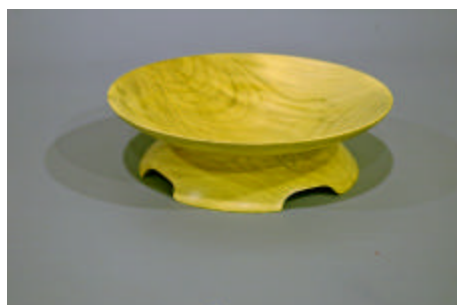
Bob Barrett – Maple Leg Bowl



Jack Johnson – Walnut Mirror Stand



Jack Johnson – Walnut Lidded Box



Julien McCarthy – Magnolia Oriental Bowl



Julien McCarthy - Sperm Whale Carving in Oriental Bowl



Julian McCarthy – Spalted Maple Bowl
with Walnuts for Feet



Paige Cullen – Walking Sticks



Michael Jones – Spalted Maple Hollow
Form

CHAPTER OFFICERS

Bob Moffett, President 2416 Wimbleton Circle Burlington, NC 27215 (336) 229-6141 bc_moffett1@bellsouth.net	John Morris, Vice President 807 Cliftwood Drive Siler City, NC 27344 (919) 742-5148 jgmjr1@hotmail.com	Lisa Mason, Secretary 531 Bennett Rd. Stoneville, NC 27048 (336) 427-3059 ljmram@hughes.net	Bob Holtje, Treasurer 943 Ridge Gate Dr. Lewisville, NC 27023 (336) 945-0503 bob@holtje.com	Paige Cullen, At Large Mbr. 3608-11 East Lee Street Greensboro, NC 27406 (336) 402-7699 nighteagle317@yahoo.com
---	--	--	---	--

EX OFFICIO

Bob Muir, AAW,NCWS 4214 Stonehenge Rd. Greensboro, NC 27406 (336) 638-6012 rmuir2@triad.rr.com	James Duxbury, Prog Chair 3141 Shelly Graham Drive Graham, NC 27253 (336) 227-7168 cyberdux@bellsouth.net www.duxterity.com/ec	Jim Terry, Newsletter, Website 111 Anita Drive Winston-Salem, NC 27104 (336) 768-0033 jimterry@bellsouth.net	Lan Brady, At Large Mbr. 5202 Ashworth Road Greensboro, NC 27405 (336) 621-6783 lan.brady@mail.cone.com	Rita Duxbury, Librarian 3141 Shelly Graham Drive Graham, NC 27253 (336) 227-7168 cyberdux@bellsouth.net
---	---	---	--	--

**MEETING LOCATION: Leonard Recreation Center (336) 297-4889).
6324 Ballinger Road, Greensboro, NC 27410**

FROM WEST OF GREENSBORO

- Take I-40 East to Exit 212 (Bus-40 Greensboro To Bryan Blvd). Exit is from the right lane.
- At the top of the Exit 212 ramp take Exit 24 (To Bryan Blvd. PTI Airport). You will now be headed north on the new highway.
- Exit the new highway onto W. Friendly Ave. and go left (west) on W. Friendly.
- Go about ¼ mile west on W. Friendly to Chimney Rock Rd. and turn right (north at traffic light) on Chimney Rock Rd.
- As Chimney Rock Rd. parallels the new highway, you will come to the intersection of Ballinger Rd.
- Turn right on Ballinger and go under the new highway. Shortly beyond the overpass Leonard Recreation Center will be on your left.

FROM EAST OF GREENSBORO

- Take Bus-40 through Greensboro
- Take Exit 24B (To Bryan Blvd. PTI Airport). You will now be headed north on the new highway.
- Exit the new highway onto W. Friendly Ave. and go left (west) on W. Friendly.
- Go about ¼ mile west on W. Friendly to Chimney Rock Rd. and turn right (north at traffic light) on Chimney Rock Rd.
- As Chimney Rock Rd. parallels the new highway, you will come the intersection of Ballinger Rd.
- Turn right on Ballinger and go under the new highway. Shortly beyond the overpass Leonard Recreation Center will be on your left.

FROM THE NORTH SIDE OF GREENSBORO

Ballinger turns west from New Garden / Guilford College Rd. just north of Guilford College. The following link to Mapquest will detail this area. Directions from Bus-40 to Guilford College Rd have been removed since the above directions are much faster from Bus-40.

<http://www.mapquest.com/maps?address=6324+Ballinger&zipcode=27410>

Dues Renewal or Application for Membership Piedmont Triad Woodturners Association

Date _____ **NEW APPLICATION** **RENEWAL**

Name _____ Phone _____ (Home)

Address _____ Phone _____ (Work)

City _____ E Mail _____

Zip _____ AAW membership No. _____

Membership Fee: \$24.00 per year. Dues paid In October each year. We prorate dues if you are joining at other times of the year.
Oct/Nov/Dec \$24.00; Jan/Feb/Mar \$18.00; Apr/May/Jun \$12.00; Jul/Aug/Sep \$6.00.

For those who desire to receive the newsletter via US Mail the dues will be:
Oct/Nov/Dec \$30.00, Jan/Feb/Mar \$22.50, Apr/May/Jun \$15.00, Jul/Aug/Sep \$7.50.

Please make check payable to Piedmont Triad Woodturners Association.
Mail to: Bob Holtje 943 Ridge Gate Dr. Lewisville, NC 27023