



Piedmont Triad Woodturners Association



www.woodturner.org

Newsletter
March 2011

March 8th – Joe Ruminski – Small Projects
April 12th – Jerry Measimer – Small Hats
May 10th – Michael Jones – Sanding & Finishing
June 14th – Scot Conklin - Pens

Come on out on Tuesday, March 8 at Leonard Center with a smile on your face and an example of your work/art.

JOHN G. MORRIS, JR.
The Head Cheerleader

Message from the President:

GREASING THE WHEEL

Greetings! PAST HISTORY- at our February meeting, our long-time Secretary Lan Brady, presented an excellent demonstration about "From a Log to a Bowl." A 3+ hour breakout session followed on Saturday which allowed hands-on, up-close-and-personal observation, and a lot of good questions/well thought out answers. More specifics later in this Newsletter. Lan--well done!



Also at our first meeting of the year, most of our T-E-A-M players were presented to the membership. We should finish up on this on March 8 (hint--Jim and Rita Duxbury have returned from Hawaii. We'll also start having some short reports about our duties, responsibilities, and assignments as Officers/Directors/other Team members as we represent PTWA's interests in your absence.

Current Events--we are fortunate to have Joe Ruminski who will demo small projects. Joe is a turner with a lot of personality, knowledge, and ability to communicate with his audience. We all should look forward to his presentation as we learn more about our craft.

Although this message is short, please keep in mind that PTWA is everybody's. Normally the more we individually become involved in an activity, project, group, etc., the more we get out of it. And folks, it does not take a nuclear scientist to figure that out!

Notes from the February Meeting:

- President John Morris opened the meeting.
- John discussed some of his vision for the future of the club, saying that "The wagon ain't broke, we are going to add some grease to the wheels." John explained that we are a family sharing mutual interest in woodturning and we should work together to benefit all members of the club.
- John recognized former President Bob Moffett and thanked him for his leadership for the past 3 years.
- John introduced the PTWA leadership team for 2011.
- Bob Moffett introduced and explained the "Turner of the Month" program for 2011 and passed around a sign-up sheet. This received a good response and club members signed up for all months in 2011.
- Bob Moffett presented the "Turning Challenge" for the next three months.
- John gave everyone in attendance a "Round TUIT" so that we wouldn't have any excuse for procrastinating.
- Jim Yarborough, George Suderman and Mike Thompson presented the Instant Gallery and Turning Challenge Gallery.
- Pat Lloyd and Wayne Peterson photographed both the Instant Gallery and Turning Challenge Gallery.
- Bob Holtje presented his "Tip of the Month" which was using rare earth magnets to attach accessories such as chuck keys and rulers to the lathe so you can find them when you need them.

- George Suderman presented his “Tips of the month” which was to use shelf brackets as handles for burning wires. You attach the wire to the hole in each end of the shelf bracket. This produces a triangle. Then hold the wire against your turning using the shelf bracket as a handle.
- Doc Green and his team held the Raffle. The raffle raised a record amount of over \$200 to add to the club treasury. Thanks to everyone who participated!
- Chris Roe was very excited when she won the Turner of the Month turning which was a beautiful platter turned by Lan Brady.
- Jim Barbour passed out tickets so we could vote on which piece the club wanted to send to the AAW Traveling Exhibit to represent our club. There were five entries. A box made from a Banksia Pod with an ebony foot, lid and finial turned by Joe Ghezzi was selected by the club to represent our club in the exhibit. The other pieces will be displayed in a local gallery.
- Lan did the demo which was “Turning a Log to a Bowl.” He had an excellent handout which explained the steps in his demo. He included many good turning tips in his demo, to many to list here.
- Lan announced that he will be leading a Breakout Session on “Turning a log to a bowl” Saturday, February 12, 2011. He will go into more detail at that time.

Respectfully submitted,
Bob Moffett

Breakout Session - From Firewood to Finished Bowls

On Feb 12, we held our first breakout session of 2011. We had 16 members and guest present. The discussion literally started with a section of log on the table. We reviewed how to analyze the log to achieve a well balanced end result. At first glance, the log appeared it would make 2 wonderful 14” salad bowls. But on further examination of the end grain, it was obvious that the pith was nowhere near center on this log. Without making the first cut, we are already redesigning our 2 main bowls from this



piece. In order to balance the grain, we needed to rotate the log about 90 degrees for our center to be right.

This reduced the width dimension of the bowls to about 12”, but one blank would be nearly 9 inches deep. We decided to cut that blank in half. We now have 3 bowl blanks about 12” wide and about 4 inches deep. The grain is well balanced in all three. Don’t forget, we also cut out about 1” to eliminate the pith. That left us with a couple of 1x4’s of quarter sawn oak, which was set aside for a later flat works project.

We selected our piece to turn and proceeded much the same way we did at the Tuesday night demo. The big advantage to the breakout session is that we took the time for audience participation. Several newcomers to bowl turning got some hands-on experience.

When we switched to the dry blank, we trued up the top and outside. Now it was time to experiment. We found areas on the outside that do not add any interest or character to the piece. We decided to embellish the outside surface. We experimented with:

- Sorby Texturing tools
- Wagner embossing tools
- Homemade burning wires of different sizes
- Air hammer
- Chatter tool
- Beading tools

We were able to dress up the bland parts of a lifeless bowl and make the outside really gain some attention. The session ended with a brief discussion of finishes. Hopefully everyone left with their questions answered and a few new challenges to practice at home.

Lan Brady

PTWA Logo Clothing:

Bob Muir has obtained a quote for logo clothing and will have an order form at the next meeting.

- These prices include an embroidered club logo on the left chest.
- Long sleeve heavyweight (7.5oz) denim shirt - \$39.66 (S - XL), \$45.66 (2X - 4X)
- Short sleeve denim shirt (mens, womens) - \$34.66 (S - XL), \$39.66 (2X - 4X)
- Colored "Easy Care" no wrinkle long sleeve shirt (S608) - \$28.66 (S - XL), \$33.66 (2X - 3X)
- Polo shirt (mens, womens) no pocket (K420) - \$26.66 (S - XL), \$30.66 (2X - 4X)

- Polo shirt (mens, womens) pocket (K420) - \$31.66, (S - XL), \$36.66 (2X - 4X)

Adding an embroidered name to the right chest is \$12.50 extra.

September 2011

October 2011

November 2011

December 2011

John Morris

Jim Barbour

Earl Kennedy & Linda Michael

Christmas Party – No Turner of the Month

Turning Challenges for 2011:

This is a list of projects that have been compiled for the President's Challenge Projects for 2011.

Instructions for all of these projects are available on the web at the following site for anyone who doesn't know how to turn the project or would like some guidance. The site is

http://www.woodturningonline.com/Turning/Turning_projects.html

<u>Month</u>	<u>Project</u>
• March	Birdhouses
• April	Tool Handles
• May	Small Cowboy Hat (Jerry Measimer will be demonstrating this in April & will have a workshop)
• June	Coffee Grinder
• July	Ring Holder
• August	Pens
• September	Sphere
• October	Trivet
• November	Christmas Ornament (can also be used for the Christmas Party drawing)
• December	No President's Challenge

Turner of the Month for 2011:

This is something we are going to do for this year. The turner who signed up for a month will turn a piece that will be donated to a separate raffle at that meeting. The item will be presented with the gallery presentation. Those present who would like to have that piece as part of their collection can place red raffle tickets in the cup associated with this piece. Lan Brady donated a beautiful platter at the February meeting which was won by a very excited Chris Roe. The following is a list of those who signed up at our February meeting.

March 2011	Bob Moffett
April 2011	Wayland Loftin
May 2011	Julien McCarthy
June 2011	Philip Weathersbee
July 2011	Joe Ghezzi
August 2011	Scot Conklin

AAW Traveling Exhibit:

Congratulations to **Joe Ghezzi** for having his Banksia Pod Box selected to represent PTWA at the AAW Symposium in Minneapolis this summer. Thanks to all who submitted turnings.



Joe Ghezzi



Jim Yarbrough



Earl Kennedy



Bob Moffett



James Duxbury

Box Making Article:

If you are interested in making turned boxes, Michael Stafford (demo for us last year) has an excellent article in this issue (April 2011) of "Woodturning Design". If you want a well illustrated article that takes you step-by-step through the process, this is it.

Instant Gallery:

We are adding to the Instant Gallery an area where you may bring a piece that will not be reviewed or photographed. You may have a piece you are working on and need some help. Bring it and grab some of our members and ask for some help. You may have a finished piece you would like to obtain some a critique from another member.

Year End Drawing:

Yellow tickets for our year-end drawing for the four \$100 checks are obtained as follows.

- 1 ticket – Submit items to instant gallery

- 1 ticket – Bring items for the raffle
- 5 tickets – Conduct meeting demonstration
- 3 tickets – Conduct a mini demonstration
- 5 tickets – Conduct a breakout session

PTWA members only are eligible for the year-end drawing.

Red tickets for the raffle may be purchased by Members and Guests.

Support our raffle by bringing items to be raffled and purchasing tickets.

Photos of the February Instant Gallery

When you bring items for the gallery, please log it in so we can properly assign credit.

Photos by Pat Lloyd. All photos are the property of PTWA and the individual woodturner. You can see the larger color versions by going to the On-Line Newsletter and the Instant Gallery on our website <http://www.ptwoodturners.org>



Doc Green – 6” Ash Hollow Form



Jim Yarbrough – 8” Ambrosia Maple Bowl



George Sudermann – Norway Maple Burl Pen & Pencil Set



Carter Deaton – 8” Mulberry Bowl



Carter Deaton – 4” Mulberry Bowl



Julien McCarthy – 8” Inlaid Walnut Plate



Julien McCarthy – 10” Inlaid Footed Magnolia Bowl



Jim Terry – 7” Natural Edge Honey Locust Bowl



John Morris – 12” Mahogany/Poplar Open Segment Bowl



John Morris – 12” Walnut/Poplar Closed Segment Bowl



Floyd Lucas – Oak Lidded Bowl



Earl Kennedy – Pecan Colored Bowl



Linda Michael – Colored Leaf Poplar Bowl



Linda Michael – Pierced Bowl



Lan Brady – Mahogany Platter



Bob Moffett – 10” Cherry Fluted Bowl



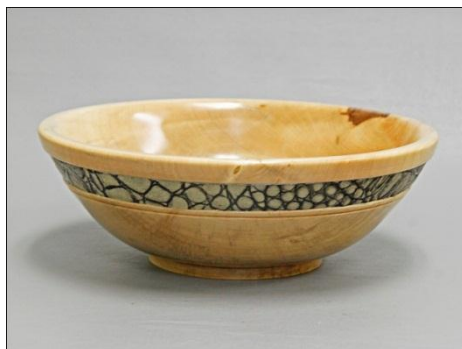
Bob Moffett – Natural Edge Grapevine Bowl



Pat Lloyd –Large (20”+) Sugar Maple Bowl



Harold Jones – 8” Walnut Bowl w/ Embossed Leather Inlay



Harold Jones – 8” Elm Bowl w/ Embossed Leather Inlay



Bert Rau – Spalted Sycamore Candlestick



Bert Rau – Oak & Spalted Sycamore Bowl



Michael Jones – Cocobolo Hand Wheel for Oneway 2436



Tom Ogburn – Maple Bowl



Jim Barbour – Cocobolo Goblets



Scot Conklin – Burl & Acrylic Majestic Pen



Scot Conklin – Buckeye Burl Apollo Pen



George Sudermann – 8" Walnut Music Box



Dave MacInnes – 8" Cherry Goblet



Dave MacInnes – 8" Ambrosia Maple Bud Vase



Tim Smith – 8" Walnut Cake Stand



Julien McCarthy Inlaid Locust Goblet



Dean Hutchins – Walnut/Maple Segmented Vase



Dean Hutchins – Cherry/Maple Segmented Vase



Michael Jones – Mulberry Natural Edge Vase



Wayland Loftin – Ash & Ebony
Lidded Box



Jack Johnson – Sycamore/Walnut
Vase

Challenge Gallery – Mushroom or Platter



Doc Green – Poplar Platter



Carter Deaton – Threaded Dogwood
Mushroom



Jim Yarbrough – Walnut/Maple Birdhouse
Mushroom



Floyd Lucas – Poplar Platter



Earl Kennedy – Colored Pecan Platter



Bob Moffett – Walnut Platter



Lan Brady – Maple Platter



Scot Conklin – Dymondwood Mushroom

MENTORS

Jim Barbour, Elon (336) 584-4228	Bob Moffett, Burlington (336) 229-6141	Bruce Schneeman, Summerfield (336) 644-9973
Jim Duxbury, Graham (336) 227-7168	John Morris, Siler City (919) 742-5148	George Sudermann, Winston-Salem (336) 923-2007
Jack Johnson, Stokesdale (336) 643-6888	Bob Muir, Greensboro (336) 638-6012	Jim Terry, Winston-Salem (336) 768-0033
	Earl Kennedy, Trinity (336) 472-6243	

CHAPTER OFFICERS

President – John Morris; 807 Cliftwood Drive; Siler City, NC 27344; (919) 742-5148; jgmjr@hotmail.com
 Vice President – Jim Yarbrough; 921 Vernon Ave. Winston-Salem, NC 27106, (336) 723-8391; jyarbrough@triad.rr.com
 Secretary – Lan Brady; 5202 Ashworth Road; Greensboro, NC 27405; (336) 621-6783; lan.brady@mail.cone.com
 Treasurer – Bob Holtje; 943 Ridge Gate Dr.; Lewisville, NC 27023; (336) 945-0503; bob@holtje.com
 Member at Large – George Sudermann; 3524 Yackinville Rd.; Winston-Salem, NC 27106; (336) 923-2007; woodspin@earthlink.net
 Member at Large – John Moehlmann; 223 E. Parkway; High Point, NC 27262; (336) 889-3156; jmoehlmann@triad.rr.com

EX OFFICIO

AAW, NCWS – Bob Muir; 4214 Stonehenge Rd.; Greensboro, NC 27406; (336) 638-6012; muir2@triad.rr.com
 Program Chair – James Duxbury; 3141 Shelly Graham Drive; Graham, NC 27253; (336) 227-7168; cyberdux@bellsouth.net
 Newsletter/Website – Jim Terry; 111 Anita Dr.; Winston-Salem, NC 27104; (336) 768-0033; jimterry@bellsouth.net
 Librarian – Rita Duxbury; 3141 Shelly Graham Drive; Graham, NC 27253; (336) 227-7168; cyberdux@bellsouth.net

MEETING LOCATION: Leonard Recreation Center (336) 297-4889).
6324 Ballinger Road, Greensboro, NC 27410

FROM WEST OF GREENSBORO

Take I-40 East to Exit 212 (Bus-40 Greensboro To Bryan Blvd). Exit is from the right lane.
 At the top of the Exit 212 ramp take Exit 24 (To Bryan Blvd. PTI Airport). You will now be headed north on the new highway.
 Exit the new highway onto W. Friendly Ave. and go left (west) on W. Friendly.
 Go about ¼ mile west on W. Friendly to Chimney Rock Rd. and turn right (north at traffic light) on Chimney Rock Rd.
 As Chimney Rock Rd. parallels the new highway, you will come to the intersection of Ballinger Rd.
 Turn right on Ballinger and go under the new highway. Shortly beyond the overpass Leonard Recreation Center will be on your left.

FROM EAST OF GREENSBORO

Take Bus-40 through Greensboro
 Take Exit 212 (To Bryan Blvd. PTI Airport). You will now be headed north on the new highway.
 Exit the new highway onto W. Friendly Ave. and go left (west) on W. Friendly.
 Go about ¼ mile west on W. Friendly to Chimney Rock Rd. and turn right (north at traffic light) on Chimney Rock Rd.
 As Chimney Rock Rd. parallels the new highway, you will come the intersection of Ballinger Rd.
 Turn right on Ballinger and go under the new highway. Shortly beyond the underpass Leonard Recreation Center will be on your left.

FROM THE NORTH SIDE OF GREENSBORO

Ballinger turns west from New Garden / Guilford College Rd. just north of Guilford College. The following link to Mapquest will detail this area.
 Directions from Bus-40 to Guilford College Rd have been removed since the above directions are much faster from Bus-40.

<http://www.mapquest.com/maps?address=6324+Ballinger&zipcode=27410>