

NEXT MEETING:

March 4th - Barbara Dill – Multi Axis Turning

FUTURE DEMONSTRATORS:

April 1st – Don Olsen – Crotch Turning

May 5th – Gary Sanders - Coloring

MINUTES OF FEBRUARY 5th MEETING:

- President Bob Moffett opened our meeting.
- Welcome was extended to 11 guests
- REMINDER dues are due. Jim Terry needs to get the names of our members to Klingspor and other vendors so that we may benefit from the club discounts.
- Casey has more wood available at his house. Call him to arrange for a time to go by and pick up some. 336-669-2928
- We need some volunteers to help set up and break down for our meetings
- Please return all of the library's video/DVD/books that you may have at home. If you are not sure check with Rita Duxbury to see if you have any checked out. Also if you have any books or DVD's that you would like to donate to the library bring them to the next meeting.
- TOPS FOR TOTS In memory of Chet Greathouse we will continue to provide these tops to the children of St. Judes. Remember that the tops must be at least 1 3/4 inches in diameter so they will not pose a choking hazard. No tops from CD's or DVD's.
- BIRDFEST 2008- May 1st, 2nd, and 3rd. Last day for juried art is April 19. Contact Jim Yarborough for more information.
- A DAY AT THE LATHE- Saturday April 5th, Concord, NC. Registration information is available on the bulletin board. Pre-register by March 15th. \$45 or at the door for \$60. Sponsored by the Southern Piedmont Woodturners.
- Utah Woodturning Symposium- May 22-24th.
- AAW Symposium June 20-22nd. Richmond Virginia. Gene Briggs gave the treasury report.



John Morris presented the instant gallery.



Charles Nall- Demonstrator

Charles is a very accomplished wood turner and provided us with an interesting demonstration. Based on the upcoming AAW Symposium Challenge on functional turned pieces Charles gave us some interesting ideas. Turning a banjo? The resonator and the tone ring were turned wood on a banjo that Charles brought to show us some items that can be made from turning wood. For those they may be up to the challenge the instructions for making a 5 string banjo are in the book: "Earl Scruggs and the 5 String Banjo." Other ideas that he brought forth were trash cans, funeral urns, tool handles, and vases.



Charles taught us ways to use decorative finishes on our turned art especially where the wood may have a flaw or a crack that developed later. Wood carving, painting and wood burning was some of the examples that he used. He emphasized that if you see a shape that you like, try to make it. Decorate the piece with painting or carving or both. Look around you for objects that give you inspiration. Make "mock up's" of designs and keep them for future use. These do not have to be large items but small, however the finished pieces can be as large as they need to be.

Another area that Charles talked about was ways to turn thin walls. He uses green wood, turns it to a cylinder then hollows it out using a forstner bit to cut down on the drying time of the wood. He uses a contrasting wood to make the plug for the hole left after turning.. Here again if you end up with flaws or cracks use it as a decorative accent or carve it out.

The meeting was concluded with the raffle.

Submitted by Lisa Mason for Lan Brady.

MESSAGE FROM THE PRESIDENT:

I would like to thank Charles Nall for his interesting demonstration last month. He touched on a lot of different topics and communicated well with the club members. Charles had something, at some point, in his demonstration that benefited most of us in one way or another.

Next month, Barbara Dill will be demonstrating Offset Turning. She has had articles recently in the AAW American Woodturner magazine, Fall 2007 and Winter 2007 issues. It is truly amazing. I have personally tried some multi-axis turning, but nothing like what she does! I think we are all in for a treat!

Jim Duxbury has been working hard to line up demonstrators and activities for the upcoming year. He should be commended for his efforts. Lining up talented demonstrators is not an easy task. If you would like to get experience as a demonstrator in front of your own club, I'm sure Jim would be glad to hear your proposed ideas. Jim is also in the planning stages of lining up a one day workshop on Wednesday, May 7th with Gary Sanders on coloring. He is arranging the use of the Woodcraft facilities for this workshop. Gary will be teaching the following week at John Campbell Folk School so that should certainly vouch for his abilities. I look forward to attending that workshop and hope to see quite a few other club members there also. Jim is also in the planning stages for a workshop in October, but that has not been finalized yet. We will keep you posted on the details of that workshop as they unfold. Please let Jim know if you have an idea for future workshops.

I want to personally thank all the people who volunteered to help clean-up after last meeting. It was fun to work together and we were able to get everything put up in a short amount of time. If a couple of people could get to the Center about 6:15, we would appreciate help in getting set up for the meeting as well as putting things away after the meeting. If you wonder what you can do to help, just ask someone who is working or ask any Board Member. We are not asking for an every month commitment, but it would be nice to have some help. The Center Director has asked if we will help him by folding up our chairs and putting them in the closet in the back of the room at the end of the meeting. As good as they have been to us, I don't think it is unreasonable for each of us to put our chair away at the end of the meeting. It's not a big task, but it does need to be done. Let's help him out with this.

We had several people bring in woodworking and woodturning books at the last meeting and they were much appreciated. Let's all look through our bookshelves and see if we have any more items that we can contribute to the library. All of us will benefit from an expanded library. So, if you have woodturning books, videos or DVDs in good condition that you no longer use, please consider contributing them to the library for others to borrow. If you have borrowed items, please return them to the library so others can enjoy them. The cost for checking out books, tapes and DVDs from the library is \$1 for books tapes and DVDs by local demonstrators and \$2 for tapes and DVDs by

national demonstrators. Items checked out should be returned the following month so others can use them. We plan on using the proceeds from rentals to expand our library. If you have any suggestions for items that you would like to see added to the library, please either see Rita at the meeting or send her an email.

Our newsletter last month was really great, thanks to the hard work of Jim Terry. If you see articles, or write an article that you think would be good to put in the newsletter please send or email them to Jim for possible inclusion. His email address is at the end of the newsletter. Keep in mind that we need to give consideration to copyright laws and get permission to reprint the articles. Even if the articles are not covered by copyright laws, we need to get the writers permission to publish the article in our newsletter and then give them the proper credit for having written the article.

Gene Briggs is doing a great job of keeping the books for us and running the monthly raffle. The raffle is one way that we raise money to support the club without raising dues. We use this money to pay for equipment, visiting demonstrators and supplies to run the club. Please bring items for the raffle each month. You can bring wood, old tools that you are no longer using or any other items that you think other club members may like to bid on.

Gene also keeps track of the tickets for the annual raffle for us. It has come to my attention that we may have been lax in informing new members how the annual raffle works. We have also made some changes in it this year. The way to earn tickets is as follows:

- Bringing one or more items for the Instant Gallery = 1 ticket
- Bring one or more items for the Monthly Raffle = 1 ticket
- Bring in 5 tops (lowered from 10 tops last year) = 1 ticket
- Present a demonstration = 5 tickets

All tickets will be put in a box at each meeting and at the end of the year 4 tickets will be drawn at the Christmas Party. Each person whose ticket is drawn will win \$100.

We are making progress in qualifying all club members for the discount program with Hartville Tool. Since we have to send a list in to Hartville Tool identifying our club members eligible for the discount, it will initially apply to members who were members and had their dues paid as of February 2008. I will check and see if we can update the list quarterly or if it is only updated annually and let the affected members know.

We are always looking for ways to improve our club. Please let any Board Member know what we can do, that we aren't doing now, which you think would improve our club for all members? If you have some suggestions or request, or if you want to know where your talents can be used, contact any Officer or Board Member and your ideas will be considered. This club belongs to all of us.

See you at the March 4th meeting,

Bob

TRUISMS FROM JOHN G.

Some of you may have heard what I call "Selected Truisms from John G. as plagiarized from persons smarter than I am". Throughout this year I would like to share these with you along with a little elaboration.

Truism 1. Of utmost importance-Safety, **Safety, Safety!**

Most of us do woodturning for enjoyment-as a hobby. From the movie Forrest Gump we realize that "accidents" do happen. Through efforts such as proper techniques, proper planning, and proper equipment we can keep accidents to a minimum and thereby enjoy the many varied forms of woodturning. In my shop I try to use earplugs or earmuffs to protect my hearing from the loud noises from machinery. When sanding I normally have a fan blowing over my shoulder, a dust system collecting the fine, but sometimes hazardous particles and I wear a filtered dustmask/eyeshield. Also I normally carry a bandaid in my billfold to cover that little nick we all get. Blood stains on a beautifully turned curly maple piece are not the best color match.

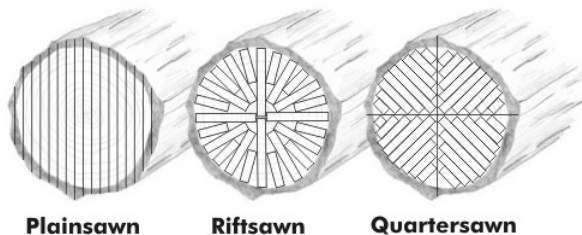
Fellow PTWA members, what we are talking about is generally using common sense—a commodity that is sometimes in short supply. By realizing and applying safety, we all should "HAVE AN ENJOYABLE TURNING EXPERIENCE." (Which is the last John G. Truism.)

John G. Morris

FROM THE LIBRARY CORNER:

TREE OF KNOWLEDGE Did you know.....

There are a variety of ways that lumber can be cut out of a log including plainsawn, riftsawn and quartersawn. Each method has its own advantages and disadvantages.



Plainsawn wood is perhaps the most straightforward way to cut rectangular-profiled boards out of a round log. Sawmills create plainsawn lumber by making a series of parallel cuts in a log. This way of cutting wood provides excellent yield because it minimizes scrap, however plainsawn lumber has some critical disadvantages. Woodgrain in a log is comprised of a series of concentric rings beginning in the center. Plainsawn boards have *substantially different* and often interesting grain patterns depending on where they were cut out of the log. Since wood expands and contracts in different ways with respect to grain, plainsawn lumber is typically less stable than the alternatives of riftsawn or quartersawn. Each method has its own advantages and disadvantages.

Riftsawn lumber is much more stable than plainsawn lumber. As shown in the drawing, each board has the same relation to the log, and therefore each board will have the same grain pattern. Furniture made out of riftsawn wood has more of a uniform appearance due to the similarity of grain

patterns among different boards. Unfortunately, rift-sawing provides very poor yield and as is evident in the drawing, lots of wedge-shaped scraps are produced. The low yield has ensured that riftsawn wood is a rarity at the lumber yard.

Quartersawn boards are created by first cutting a log into quarters and then creating a series of parallel cuts perpendicular to the tree's rings. The yield is not as substantial as in plainsawing but much greater than in riftsawing. The grain in quartersawn wood is relatively consistent, and therefore the end product is stable and often preferred by woodworkers and furniture-makers. Quartersawn wood may include *medullary rays* and wavy grain patterns that some people prefer to the figures that are revealed with alternative sawing methods.

Since the yield produced by quartersawing wood is substantially lower than other plainsawing, the cost is relatively high. Oak is the most common quartersawn wood; on occasion you may be also able to find quartersawn walnut, cherry and maple. The increased stability, makes quartersawn wood highly sought after for string instrument necks and fret boards. The neck of a guitar, bass or violin, for example, should remain stable throughout their lives; quartersawn wood helps ensure that instrument's sound remains as invariable as possible.

Information thanks to: <http://www.wisegeek.com>

Rita Duxbury, Librarian

MESSAGE FROM AAW:

Here is Malcolm Tibbetts' February message.

As you might know by now, each month a different AAW board member is invited to address the membership in this setting. February is my turn.

The board has just held its winter meeting at this year's up-coming symposium site - Richmond, VA. After last fall's election, membership on the board has changed as Tom Wirsing takes a seat and Corey Anderson has been appointed to complete Sean Troy's term after Sean resigned for personal reasons. I wish Sean the very best and thank him for his service and I welcome Tom and Corey on board. Past board members Bill Haskell and I were re-elected; it continues to be an honor to serve.

There are some exciting things happening in the AAW. Of course the up-coming symposium is at the top of the list. I won't take space here to describe all the highlights of the symposium, but with over 91 different demonstration topics, I think it's fair to say that there will be something for everyone. After touring the Richmond Convention Center facilities, I was impressed by the demonstration space, the trade show and instant gallery space, and even the food service offerings. It's going to be an unbelievable experience for woodturners. I whole-heartedly encourage everyone to consider attending.

Our annual symposium has grown so much in recent years that not many facilities can accommodate us. One small restriction this year is the capacity of the banquet hall for our Saturday night dinner and auction. Tickets for this dinner are limited, so make sure you secure your tickets early; otherwise, you may be disappointed.

Another exciting AAW project - we have started work on a 25th Anniversary book that we hope to have available in 2011 at the St. Paul symposium. It seems as if we just celebrated our 20th anniversary and here we are preparing for the 25th. There will be much more on this book project in the near future. In the meantime, if you have any interesting stories related to the history of the AAW, then start thinking about sharing them.

As chair of the EOG (Education Opportunity Grants) committee, I am happy to report that almost 150 applications have been received for consideration. The committee members are busy evaluating the requests and we hope to award more than \$80,000 this year in individual scholarships, chapter assistance, and to school woodturning programs.

Have you visited your AAW website lately? Our webmaster, Ed Davidson has really done a wonderful job; the site is easy to navigate and is full of valuable information. With the hard work of board member Jean

LeGwin and with Ed's expertise, soon members will have access to hundreds of past journal articles.

Bottom line: as we go into our 22nd year, the AAW continues to grow and continues to advance woodturning by providing more and more services to its members. The next time that you attend a club meeting, do your non-AAW friends a favor - convince them to join. I'm pretty sure that they will thank you.

MEMBER IN THE NEWS:

Gene Briggs was featured in an article by Karen Johnson in the Greensboro News and Record on Sunday the 17th. We congratulate Gene on his accomplishments (144 pepper grinders to date! WOW). It is always nice to get this kind of publicity for a member and the club. You can read this article by going to the following link:

http://www.news-record.com/apps/pbcs.dll/article?AID=/20080217/NRS_TAFF/802170340/-1/news1802

ANOTHER MEMBER'S TRAVEL

Lan Brady has been on work assignment in Nicaragua for the past month and sends this message. "Here is a picture of us standing on the rim of an active volcano. The haze in the background is the sulfur cloud. It is Masaya volcano. you can see the magma after dark." Lan



PHOTOS FROM JANUARY INSTANT GALLERY

WHEN YOU BRING ITEMS FOR THE GALLERY, PLEASE LOG IT IN SO WE CAN PROPERLY ASSIGN CREDIT.

Photos by Mike Evans. All photos are the property of PTWA and the individual woodturner. You can see the color versions by going to the **On-Line Newsletter and the Instant Gallery on our website** <http://www.ptwoodturners.org>



Tom Evans (Mike's Dad) – Cherry Salt & Pepper



Tom Evans (Mike's Dad) – Myrtlewood Bowl



Earl Kennedy – Hollow Form



Earl Kennedy – Pedestal Bowl



Linda Michael – Decorated Ball



Earl Kennedy – Knot Vase



Linda Michael – Flower Vase



Linda Michael – Leaf Bowl



Joe Schneider – Bowl of Maple, Mahogany, Walnut & Padauk



Glen Marceil – Maple Vase Spiral Flutes



Earl Kennedy – Cedar Bowl



Bob Holtje – Pecan Natural Edge Bowl



Lisa Mason – Spalted Oak Plate



Lisa Mason - Vase



Wayland Loftin – Christmas Ornaments



Clyde Mosley – Poplar Ibibana



Jim Yarbrough – Spalted Maple Bowl



Jim Duxbury – Natural Edge Vessel



Harold Jones – Pecan Hollow Form



Harold Jones – Pecan Hollow Form



Jim Terry – Yew Vase



John Morris – Open Segment Cherry Vase



Ron Roe – Small Bowl



Joe Nelson – Poplar Fruit Bowl



Joe Nelson – Osage-Orange Hollow Vessel



Joe Nelson – Box Elder Hollow Vessel



Joe Nelson – Cherry Hollow Vessel



Bob Moffett – Maple Platter



Bob Moffett – Decorated Foot of Maple Platter



Bob Moffett – Bottle Stoppers



Gene Briggs – Walnut Bowl



Gene Briggs – Cherry Sea Urchin Christmas Ornament

“An accident at the lathe can happen with blinding suddenness; respiratory problems can build over years. Take appropriate precautions when you turn. Safety guidelines are published in the AAW Resource Directory. Following them will help ensure that you can continue to enjoy woodturning.

From American Woodturner

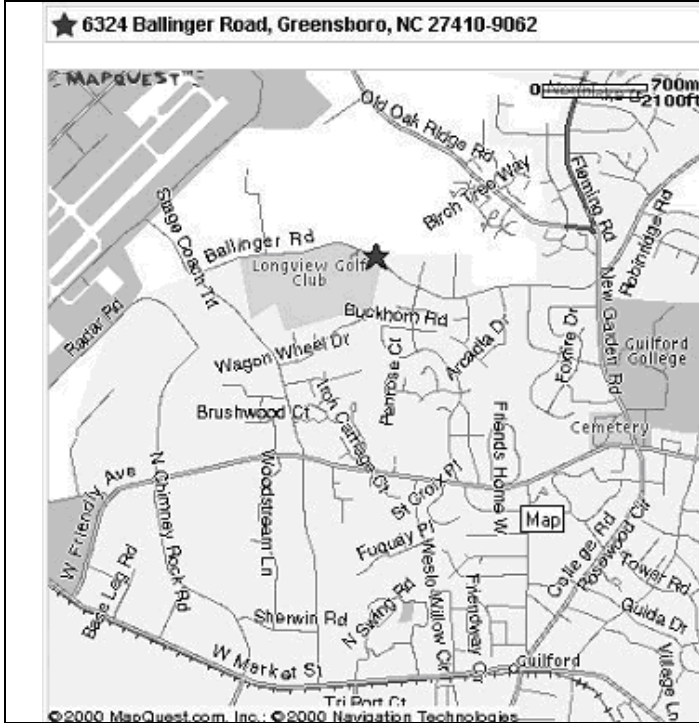
CHAPTER OFFICERS

Bob Moffett, President 2416 Wimbleton Circle Burlington, NC 27215 (336) 229-6141 bc_moffett1@bellsouth.net	John Morris, Vice President 807 Cliftwood Drive Siler City, NC 27344 (919) 742-5148 jgmjr1@hotmail.com	Lan Brady, Secretary 5202 Ashworth Road Greensboro, NC 27405 (336) 621-6783 lan.brady@mail.cone.com	Gene Briggs, Treasurer 1831 Squire Davis Road Kernersville, NC 27284 (336) 869-4584 n4qbt@prodigy.net	Paige Cullen, At Large Mbr. 3608-11 East Lee Street Greensboro, NC 27406 (336) 402-7699 nighteagle317@yahoo.com
---	--	--	--	--

EX OFFICIO

James Duxbury, Prog Chair 3141 Shelly Graham Drive Graham, NC 27253 (336) 227-7168 cyberdux@bellsouth.net www.duxterity.com/ec	Jim Terry, Newsletter, Website 111 Anita Drive Winston-Salem, NC 27104 (336) 768-0033 jimterry@bellsouth.net	Mike Evans, Photographer 172 Longwood Dr. Eden, NC 27288 (336) 453-4134 mikeevanspt@yahoo.com	Rita Duxbury, Librarian 3141 Shelly Graham Drive Graham, NC 27253 (336) 227-7168 cyberdux@bellsouth.net
---	--	--	---

MEETING LOCATION: Leonard Recreation Center ((336) 297-4889).



To the Leonard Recreation Center
Phone: (336) 297-4889
Some of the signage is confusing, so be careful.

FROM WEST OF GREENSBORO

1. Take **I-40 E**.
2. Take exit number **213**.
3. Turn **RIGHT** onto **GUILFORD COLLEGE RD**.
4. **GUILFORD COLLEGE RD** becomes **COLLEGERD**.
5. **COLLEGE RD** becomes **NEW GARDEN RD**.
6. Turn **SHARP LEFT** onto **BALLINGER RD**.
7. Leonard Recreation Center is about 1 mile on the right.

FROM EAST OF GREENSBORO

1. Take **I-85 S/I-40 W/US -29 S**.
2. Take the **I-40 WEST/US -220 SOUTH** exit, exit number **123**, towards **WINSTON-SALEM (US -421 N)**.
3. Merge onto **I-40 W/US -220 S**.
4. Stay straight to go onto **I-40 W**.
5. Take exit number **213**.
6. Keep **RIGHT** at the fork in the ramp.
7. Merge onto **GUILFORD COLLEGE RD**.
8. **GUILFORD COLLEGE RD** becomes **COLLEGERD**.
9. **COLLEGE RD** becomes **NEW GARDEN RD**.
10. Turn **SHARP LEFT** onto **BALLINGER RD**.
11. Leonard Recreation Center is about 1 mile on the right.

Dues Renewal or Application for Membership Piedmont Triad Woodturners Association

Date _____ **NEW APPLICATION** **RENEWAL**

Name _____ Phone _____ (Home)

Address _____ Phone _____ (Work)

City _____ E Mail _____

Zip _____ AAW membership No. _____

Membership Fee: \$24.00 per year. Dues paid In October each year. We prorate dues if you are joining at other times of the year.
 Oct/Nov/Dec \$24.00; Jan/Feb/Mar \$18.00; Apr/May/Jun \$12.00; Jul/Aug/Sep \$6.00.

For those who desire to receive the newsletter via US Mail the dues will be:
 Oct/Nov/Dec \$30.00, Jan/Feb/Mar \$22.50, Apr/May/Jun \$15.00, Jul/Aug/Sep \$7.50.

Please make check payable to Piedmont Triad Woodturners Association.
 Mail to: Gene Briggs, 1831 Squire Davis Rd, Kernersville, NC 27284