

**NEXT MEETING:** Tuesday, Mar. 7 at the Leonard Rec. Center.

**DEMONSTRATOR:** -- Edgar Ingram – Cylindrical Bias Turning

**FUTURE DEMONSTRATORS:**

May – Terry Brown - Skews

**NOTE FROM THE PRESIDENT:**

We are off to a good start for this year. It is very gratifying to have more members take on leadership roles and other responsibilities. It is often said about churches and many other organizations that “the same 5 to 10% of the members do all the work”. I hope we can exceed that fraction as we go along. Please be thinking about what you can do to help our club. We need a librarian. If you are willing, see Vicki to find out what is involved.

Don't forget to bring at least 10 Tops for Tots to earn a ticket for the year-long-affle.

The Planning Committee for Future NC Woodturning Symposiums has met once so far. At that meeting, we agreed on the following points:

- Event should continue to be held in alternate years and opposite to the Virginia Woodturners
- All eleven NC woodturning clubs should be invited to have representatives as members of the Board of the Corporation (see the last item).
- Event should be held in a more central location (40 mile radius of Greensboro) easily accessible to the bulk of the population of North Carolina as well as southern Virginia and northern South Carolina.
- Location should accommodate lodging, congregate dining and RV/Camping, The thought is that a “retreat” facility would be ideal
- The event should be in the Spring (April – May)
- The event should allow for Friday workshops by the “famous name” demonstrators several of which should be solicited each year.
- The event should seek a major sponsor such as Klingspor's but they should not be able to exclude other vendors from the trade fair (vendors gallery).
- The event should incorporate a Friday evening get together, a Saturday evening banquet and good lunch options all three days in the congregate dining facility
- There should be a juried competition open to all attendees, which would give statewide awards. Klingspor and other corporations could be invited to join in this and perhaps sponsor it.
- The event needs an active committee (directors plus club member volunteers), lots of pre planning and much more effective marketing. A goal would be 300+ attendees from among the approximately 900 AAW members in North Carolina
- A 501 c3 corporation should be set up and, based on an initial budget, all AAW clubs in North Carolina be invited to share in the initial capitalization in proportion to membership. Grants and donations from other arts and woodturning related vendors and organizations would also be sought.

Please communicate your opinions, suggestions, etc. to me ASAP, since the committee will meet again on March 8.

Note that it takes a lot of work and time to plan and carry out a large symposium – there are MANY DETAILS! So it will require many people volunteering to help.

- Each participating club would appoint a director and the directors would elect officers, the directors would serve three year terms on a rotating basis (first year 1/3 serve only one year, second year 1/3 serve two years, thereafter 1/3 appointed each year) this would provide for both history and new ideas.

- Net income would be redistributed as grants to the member clubs proportional to their membership with an amount held in reserve sufficient to fund the following event.
- A gallery, possibly the same as the juried show gallery, would allow AAW members to display and sell their pieces for a small commission (10%).
- A raffle of items solicited from the vendors and possibly national sponsors (OneWay, Delta, etc.) would be available to all attendees.
- The gallery, vendor area and dining area (for lunch) would be open to the public and publicized in advance. Family packages would be offered that included reduced rates for children and spouses who attend demonstrations and just the dining events.
- This proposal, along with a possible site and a first year operating budget will be presented to the officers of the three participating clubs and then, if approved in concept, the other clubs will be solicited to participate. A member of the committee would meet with the officers or attend a meeting of each of the other clubs to present the proposal and answer questions. **Bob Muir**

**MINUTES OF Feb 7th MEETING:**

We were honored to have as our guest presenter, our very own John Morris from Siler City. John has been an apprentice of Joel's for the past 2 years. He began his trip through the black hole of Wood Turning in January of 2004 with a segmented class at the local community college. He has never looked back.

To our fortune, John began with a thorough handout for reference. He was also quick to acknowledge both Malcolm Tibbets and William Smith for paving a bumpy road for any one to follow.

While many of our own designs are derived during boring business meeting and doodled in the margin of a notepads, John brainstorms while sitting at the 19<sup>th</sup> hole of the local country club. His genius is scribed on the placemat. If they ever switch from paper to cloth, he may be in trouble.

John begins by showing a few pieces of his work, some complete and others “in process” so we can see the steps involved. Pages 5-9 in his handout are from his software program. Using the design program, your vision is transformed into a 3D virtual view, a list of lumber and a cut list to complete your dream masterpiece. The lines between art and science become blurry when doing this kind of work.

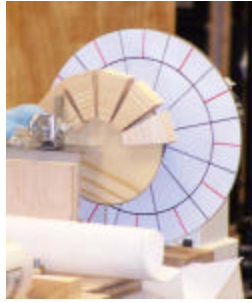
With the plan in hand, we advance to the table saw. John modestly claims that the blade cost more than the table saw itself. John reveals more of his personality as he admits that he walks the fence between frugal and cheap! Personally, I think he has much competition for that title. Myself included.

At the saw, we see that he has a homemade miter sled that is the equal to many commercial models. Without creating a dust cloud he shows us the set up and execution of cutting the pieces in a zigzag fashion to utilize the most wood. He points out that angle measurements on open segments are not as critical as on the closed equivalent. The closed version must be to the nearest 0.01 degrees, or you will see a gap in your work. For a beginner, he offered suggestions, such as making 2 half rings and sanding each flat for final glue up.



Each piece will have the edges sanded with a sponge sander. With pieces cut, sanded and segregated into chronologic order, we move onto the lathe.

Once again, commercial segmented jigs are available, but not for the Fred Sanford of Siler City. He has built a commercial grade set up that is second to none. It contains the degree dial for the spindle. It has a platform that contains both a distance scale and a temporary hold down for the glue to dry on each segment.



Titebond molding glue is applied with a flexible palette knife. Each segment is applied to the base and John advances to the next degree mark. Another piece is applied. In John's design, each layer requires 12 pieces. As many or as few segments can be used on each layer. They have found that 12 seem to be the point of diminishing returns. No sacrifice in quality and the efficiency is improved. John will build up 4 layers and stop. After a little drying time, the top surface is trued-flat. He has found 4 layers to be optimum. Past that, you start seeing unevenness in the design.

Once dry, the inside is turned to rough finish shape and we break out the 80 grit roughing gouge. Once you are happy with the inside finish, it is sprayed flat black.

Once the bottom half is built, John will build the upper portion from the top down. Basically he builds 2 bowls and glues together once turned diameters are reached. A vitally important step is to remove the black paint from the flat surfaces to be mated. You will be unpleasantly surprised at how well that little black line of 0.0001" in thickness will show up in the finished piece. I wonder how he knows this?



Once glued up, the outside is turned true. It is now time for the reverse ground scraper gouge. Both Joel and John confirm that using this tool cuts sanding time greatly.

When sanding, John uses a memory wheel to keep up with the grit he is using. He rotates the marked wheel to match the grit through all 8 steps.

The final step is to part off the completed project. And of course he uses a homemade parting tool. I hope Mrs. Morris never counts the steak knives!

During the finish process, John uses Lacquer. He colors the piece with Trans-tint dyes. More Lacquer and more lacquer. He wet sands with 400 grit on. Finish on the piece appears to be several inches thick and wet enough to drip off. But it stays put and we are allowed to view (and handle) the finished product up close. I learned a great deal this night. The most important thing was his phone number for when I get in over my head on this project. **Respectfully submitted, Lan Brady**



#### BOOK REVIEWS:

“Woodturning Jewellery” By Hilary Bowen - Published By Fox Chapel Publishing

Review By: James N. Duxbury, January 10, 2006

For the turner who has never entertained the idea of turning jewelry, this book would stimulate the creativity and provide an overview to the many techniques. Chucking and turning miniature items, gluing, inlays, decorating, and finishing techniques broaden the spectrum for almost any woodturner from the novice to the expert.

The British terminology makes for interesting reading, i.e. Colour (Color), Pillar Drill (Drill Press), Timber (Block of Wood) and makes one realize that woodturning is universal, not the terminology. The book is amply illustrated, however the photographs seem to be dark and of a yellow hue. Many of the drawings and illustrations are shown on different pages, making it difficult to follow at times.

Designing shapes to appear as the eye sees them, inlaying, and the use of alternative materials are applicable not only to the design of jewelry but to almost any other turning forms.

Instructions for the finish assembly of some jewelry items could use a little more explanation, especially for the novice. \$22.95 seems a bit steep but I think the last chapters especially would benefit most woodturners. I would buy it.

“Turning Custom Duck and Game Calls” By Ed Glen & Greg Keats - Published By Fox Chapel Publishing

Review By: James N. Duxbury, February 14, 2006

Did you ever think that you could turn a block of wood to make it call a Duck or a Crow? Or a Goose or even a Turkey?

This book clearly explains, even for a novice turner, the art of turning and using the most basic calls. The fundamentals of lathes, tools, and materials allow turners to better understand the making of calls, but more than that, great detail has been put into the special accessories used to make each type of call. Special mandrels, collet chucks, sanding sticks, and jigs are described in detail, accompanied by clear photographs and illustrations for each.

Turning miniature items, gluing, inlays, decorating, and finishing techniques are all well covered and broaden the spectrum for almost any woodturner. However additional segments in each chapter throughout the book expand the scope of this art to create very fine calls. These calls are far beyond the calls made for the average outdoorsman to actually use. In fact many of these fine crafted calls will become collectors' items for their extreme beauty.

This book does an excellent job of not only making a specific type of call, but also explaining how to tune and use the finished product.

These calls are so advanced that you almost feel sorry for the game.

Hunters or Bird Watchers that have any interest at all in turning should get many hours of enjoyment from making and using these beautiful calls. It is quite a science and at \$19.95 I would think well worth it.

**INSTANT GALLERY:** As soon as you bring your piece in, find the sheet to record your name and information about the piece, and put the ID sticker on your piece.

**Having woodturning problems?** If you would like to bring pieces that you want help with (but don't necessarily want to put in the gallery), bring them to our meetings and we'll provide an opportunity to share your concerns.

#### UPCOMING SYMPOSIUM & WORKSHOPS:

##### Southern Piedmont Woodturners Mini-Symposium:

The Southern Piedmont Woodturners presents "A Day At The Lathe", a day of woodturning featuring **Nick Cook---The Basics**, **Bobby Clemmons...Bowls**, and **Chris Ramsey...Hats**. April 1, at the Historic Courthouse, 65 Union Street, Concord, NC 9:00 AM until 6:00

PM. Admission is \$35 at the door or \$30 pre-registration. The newly renovated Historic Courthouse features a 250 seat theatre with stadium seating. This will be a very comfortable and enjoyable day. For more information or to pre-register contact Barry Russell, 6433 Charlie Walker Rd., Kannapolis, NC 28081.

Phone 704-933-9092. e-mail [brussell18@carolina.rr.com](mailto:brussell18@carolina.rr.com).  
Barry Russell, President Southern Piedmont Woodturners

### Utah Woodturning Symposium

June 15, 16, 17, Brigham Young University, Provo, Utah

The year 2006 marks the 27th anniversary of the event. Participants can select from over 100 demonstrations given by some of the best woodturners in the world. The presentations will have something for everyone, from the beginner to the professional. The symposium is open to anyone with an interest in woodturning.

Presenters: Nick Agar (England), Nick Arnall (England), Mark Baker (England), Allan Batty (England), Soren Berger (New Zealand), Julie Heryet (England), Brian McEvoy (Canada), Jenny & Graham Norman (England), Liz & Michael O'Donnell (Scotland), Graeme Priddle (New Zealand), Ken Sager (New Zealand), Kip Christensen (UT), Jim Christiansen (ID), Sharon Doughtie (HI), Robert Fehlau (UT), Fred Holder (WA), Dave Hout (OH), Pat Kramer (HI), Mike Mahoney (UT), Michael Mocho (NM), Dale Nish (UT), Curt Theobald (WY), Penmakers Guild.

Standard Registration April 30th or before \$220, Full-time Student - \$120. See <http://utahwoodturning.com/site/page/pg1205.html>

### FROM THE AAW:

I have attached a file that outlines the rules for the 2006 AAW Chapter Collaborative challenge. If your chapter has never done this,

*If you are receiving a printed copy of this newsletter via US Mail and would like to get a PDF file via email and save the club the cost of printing and postage, please send me an email to that effect. Jim Terry ([jimterry@bellsouth.net](mailto:jimterry@bellsouth.net))*

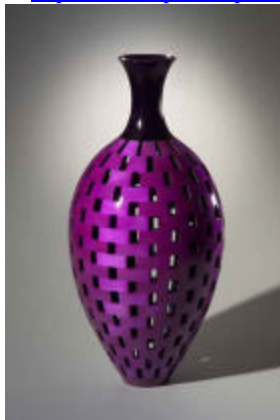
### PHOTOS FROM JANUARY INSTANT GALLERY

WHEN YOU BRING ITEMS FOR THE GALLERY, PLEASE INDICATE YOUR NAME AND THE WOOD TYPE SO WE CAN PROPERLY ASSIGN CREDIT.

**Photos by Mike Evans.** All photos are the property of PTWA and the individual woodturner. You can see the color versions by going to the newsletter section of our website or by visiting the website <http://albums.photo.epson.com/j/AlbumIndex?u=4363295&a=32079007&f=>



Lan Brady received this bowl on the Woodcentral Turning Exchange. It was turned by Michael Sinclair, a Tugboat operator and woodturner, who lives in the Orkney Islands on the northern tip of Scotland. The wood is sycamore and the weaving is locally grown sisal



Joel Hunnicutt  
This photo courtesy of Joel and his professional photographer



Earl Kennedy & Linda Michael collaborative effort of turning and pyrography  
Pear vase viewed from each side.

you will find it to be a great way to infuse new ideas and excitement into our

chapter activities. Basically, have at least 6 member's work on a project that meets the size requirements in the rules and bring the finished piece to the Louisville symposium. There are three categories, Fantasy, Artistic, and Mechanical/Technical. In past years, there have been really creative projects presented.

John Hill - AAW Chairman of Chapters and Membership Committee

(Information will be available at our Mar. meeting or email me and I will forward the PDF file to you. -- [jimterry@bellsouth.net](mailto:jimterry@bellsouth.net))

### NEWS:

**Special from Craft Supplies USA** are available to club members. If you go to their web site [www.woodturnerscatalog.com](http://www.woodturnerscatalog.com) click the Woodturners Club Members Login and enter PTWA and also enter PTWA as the promotion code at checkout. If you order by phone, mention our club and also receive any applicable discounts.

**Become a Mentor:** We would like to develop a list of members who would like to work with other members helping them improve their turning skills. You don't have to be an expert for we can all learn from each other. Send me email if you are willing to be listed.

[jimterry@bellsouth.net](mailto:jimterry@bellsouth.net).

**Classified Ads:** We would like to start a Classified section for members who have a tool or item for sale and for members who are looking for something. Send me email. [jimterry@bellsouth.net](mailto:jimterry@bellsouth.net)

**Turning Tip:** If you have a turning tip you are willing to share with the club let me know and we will include it.





Bob Karraker – Maple Bowl



Bob Karraker – Maple Bowl



Butch Hadley – Poplar Candle Holder



Bob Moffett – Maple Bowl



Bob Moffett – Maple Bowl (view 2)



Bob Muir – Cherry Spoon  
Finished version of February demonstration.



Bruce Schweeman – Oak Spindle Replacement for an Original



Bruce Schweeman – Poplar & Maple



Bruce Schweeman – Poplar, Maple & Walnut



Jack Johnson – Walnut Lamp



James Duxbury – Mechanized Nut Cracker



Earl Kennedy & Linda Michael



Earl Kennedy & Linda Michael – Maple Leaf



Earl & Linda - Spatula



Earl Kennedy – Small Tops



Earl Kennedy – Wavy Locust



Earl Kennedy – Wavy Poplar



Glen Marceil – Poplar Bowl



Glen Marceil – Red Elm Bowl



Jim Yarborough – Mahogany Repair Project



Glen Marceil – Poplar Bowl top view



Glen Marceil – Red Elm Bowl top view



Gene Briggs – Pecan Vase





Jim Terry – Maple Plate



Jim Terry – Maple Plate



Julian McCarthy – Walnut Plate with Imbedded Walnut Shells



John Morris – Maple Collection Plate #1



John Morris – Maple Collection Plate #2



Lan Brady – Maple Plate



Larry Snead – Oak Tops



Jim Terry – Assorted Fineals  
Maple & Walnut



Julian McCarthy – Mulberry, Poplar & Walnut



Julian McCarthy – With Lid Off



Larry Dotson – Red Oak Nut Bowl



Larry Snead – Apple Bowl



Larry Snead – Maple Bowl



Larry Snead – Maple Bowl



Vicki Tanner – Birch Bowl  
with Glass Inlay



Vicki Tanner – Maple Burl with top



Vicki Tanner – Cherry Bowl

**UPCOMING WOODTURNING CLUB MEETINGS AND DEMONSTRATIONS:**

<p><b>Piedmont Triad Woodturners Association</b>  <b>First Tuesday, 7 p.m.</b>, Leonard Recreation Center, Greensboro                  Mar 7 – Edgar Ingram – Cylindrical Bias Turning  <a href="http://www.piedmontcommunities.us/go/ptwa">http://www.piedmontcommunities.us/go/ptwa</a>                  Coming Soon – <a href="http://www.ptwoodturners.org">http://www.ptwoodturners.org</a></p>	<p><b>Woodturners Guild of North Carolina</b>  <b>Second Thursday, 7pm??</b>, NCSU Craft Center                   Demonstration schedule unknown to the editor.  <a href="http://www.woodturnersguild.com/">http://www.woodturnersguild.com/</a></p>
<p><b>North Carolina Woodturners</b>  <b>Second Saturday</b>, Woodworking Shop, Hickory, NC.                  Usually 1 PM (sometimes 10-4)   <a href="http://www.geocities.com/nc_woodturners/">http://www.geocities.com/nc_woodturners/</a></p>	<p><b>Carolina Mountain Woodturners</b>  <b>Third Saturday</b> at Folk Art Center (near Asheville)                  Blue Ridge Parkway just South of mile marker 382.  <b>10AM – 4PM.</b>                   Mar. – Cindy Drozda, Colorado                  Apr. – Ray Key, England      Jun – Stuart Mortimer, England                  May – John Mascoll, Florida      Jul – Graeme Priddle, New Zealand  <a href="http://www.carolinamountainwoodturners.org/">http://www.carolinamountainwoodturners.org/</a></p>

**CHAPTER OFFICERS:**

<p>Bob Muir, President                  4214 Stonehenge Rd.                  Greensboro, NC 27406                  (336) 908-6847  <a href="mailto:rmuir2@triad.rr.com">rmuir2@triad.rr.com</a></p>	<p>Vicki Tanner, Vice President                  109 Frissel Dr.                  Whitsett, NC 27377                  (336) 449-0767  <a href="mailto:vickitanner@traid.rr.com">vickitanner@traid.rr.com</a></p>	<p>Lan Brady, Secretary                  5202 Ashworth Road                  Greensboro, NC 27405                  (336) 621-6783  <a href="mailto:lan.brady@mail.cone.com">lan.brady@mail.cone.com</a></p>	<p>Gene Briggs, Treasurer                  1831 Squire Davis Road                  Kernersville, NC 27284                  (336) 869-4584  <a href="mailto:n4qbt@prodigy.net">n4qbt@prodigy.net</a></p>
<p>Page Cullen, At Large Mbr.                  3608-11 East Lee Street                  Greensboro, NC 27406                  (336) 327-4226  <a href="mailto:nigteagle317@netscape.net">nigteagle317@netscape.net</a></p>	<p>James Duxbury, Prog Chair                  3141 Shelly Graham Drive                  Graham, NC 27253                  (336) 227-7168  <a href="mailto:cyberdux@atglobal.net">cyberdux@atglobal.net</a></p>	<p>Chet Greathouse,                  Outreach                  5002 Northbend Road                  McCleansville, NC 27301                  (336) 235-0900  <a href="mailto:ckgreat@aol.com">ckgreat@aol.com</a></p>	<p>Jim Terry, Newsletter                  111 Anita Drive                  Winston-Salem, NC 27104                  (336) 768-0033  <a href="mailto:jimterry@bellsouth.net">jimterry@bellsouth.net</a></p>
<p>Mike Evans, Photographer                  188 Rierson Road                  Madison, NC 27025                  (336) 445-4746  <a href="mailto:mikevanspt@yahoo.com">mikevanspt@yahoo.com</a></p>			

**INTERESTING WEB SITES**

<http://www.piedmontcommunities.us/go/ptwa> - OUR CHAPTER'S WEB SITE  
<http://www.woodturner.org/> THE AMERICAN ASSOCIATION OF WOODTURNERS



AAW Galleries base page: <http://www.woodturner.org/gallery/>

AAW Members' gallery page: <http://www.woodturner.org/photopost/index.php>

AAW Members' forum: <http://www.woodturner.org/vbforum/forumdisplay.php?f=2>

AAW Members' e-mail discussion list info: <http://www.woodturner.org/community/discussion.cfm>

AAW products (videos, logo items, etc.): <http://www.woodturner.org/products/>

Some photos of Instant Gallery at AAW 2004 Symposium (Orlando): <http://www.swflwoodturners.org/AAW2004Gallery.html>

Directions for cutting threads for threaded lid boxes: [http://www.revolutionary-turners.com/attach/Threaded\\_Boxes.htm](http://www.revolutionary-turners.com/attach/Threaded_Boxes.htm)

Here are some web links that show a variety of different top designs:

<http://www.spinning-top.de/>

<http://www.m.ehime-u.ac.jp/~tateishi/Tops/tops/alltops01.html>

<http://sandstrum.com/MYCOLLECT.HTML>

[http://www.spinningtop.de/spinning\\_top/spinning\\_top.html](http://www.spinningtop.de/spinning_top/spinning_top.html)

<http://www.tovcrafter.com/tops/fingertops.htm>

<http://www.tovcrafter.com/tops/flips.htm>

Wood Magazine: <http://www.woodmagazine.com/>

Russ Fairfield's web site: <http://www.woodturnerruss.com/>

Christian Burchard's web site (VERY DIFFERENT!): <http://www.burchardstudio.com/>

Russ Fairfield's "How to turn a pen tutorial": <http://www.woodturnerruss.com/Pen10.html>

Ken Grunke's inside-out turning how-to: <http://www.crwoodturner.com/ornaments/ornaments.pdf>

Kenn Osborne's "How to make a segmented pen tutorial": <http://www.penturners.org/content/segpen.pdf>

Ed Davidson's "How to turn a cigar pen tutorial": <http://www.penturners.org/content/CigarPenInstructions.pdf>

Jay Pickens' "How to cast polyester resin pen blanks": [http://www.penturners.org/content/PR\\_Instructions.pdf](http://www.penturners.org/content/PR_Instructions.pdf)

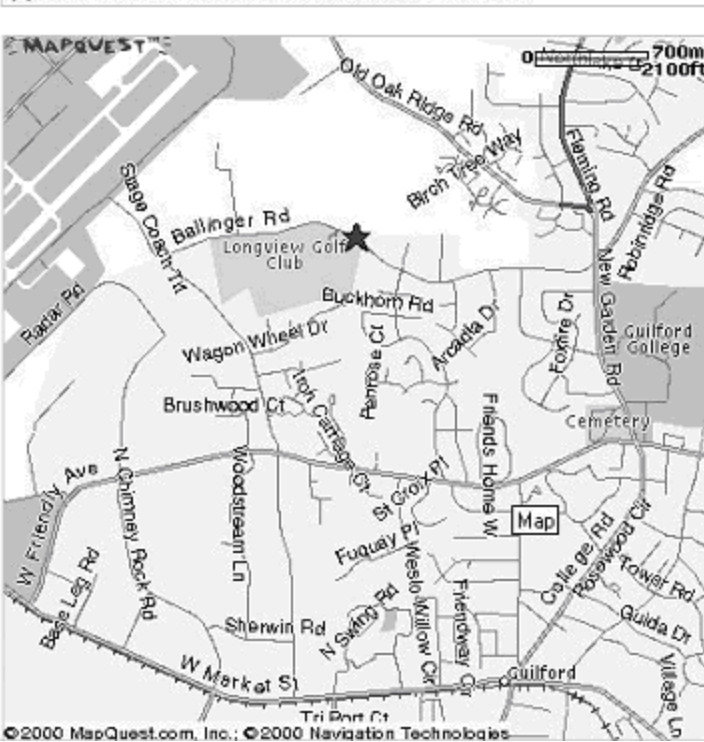
Source for epoxy and polyester resins: <http://www.artstuf.com/>

Arts and Crafts supplies: <http://www.craftsetc.com/> also <http://www.MisterArt.com/>

Irene Gafert's web pages: <http://www.woodturndeco.com/>

MEETING LOCATION: Leonard Recreation Center ((336) 297-4889).

★ 6324 Ballinger Road, Greensboro, NC 27410-9062



To the Leonard Recreation Center

Phone: (336) 297-4889

Some of the signage is confusing, so be careful.

#### FROM WEST OF GREENSBORO

1. Take I-40 E.
2. Take exit number 213.
3. Turn RIGHT onto GUILFORD COLLEGE RD.
4. GUILFORD COLLEGE RD becomes COLLEGE RD.
5. COLLEGE RD becomes NEW GARDEN RD.
6. Turn SHARP LEFT onto BALLINGER RD.
7. Leonard Recreation Center is about 1 mile on the right.

#### FROM EAST OF GREENSBORO

1. Take I-85 S/I-40 W/US-29 S.
2. Take the I-40 WEST/US-220 SOUTH exit, exit number 123, towards WINSTON-SALEM (US-421 N).
3. Merge onto I-40 W/US-220 S.
4. Stay straight to go onto I-40 W.
5. Take exit number 213.
6. Keep RIGHT at the fork in the ramp.
7. Merge onto GUILFORD COLLEGE RD.
8. GUILFORD COLLEGE RD becomes COLLEGE RD.
9. COLLEGE RD becomes NEW GARDEN RD.
10. Turn SHARP LEFT onto BALLINGER RD.
11. Leonard Recreation Center is about 1 mile on the right.

“An accident at the lathe can happen with blinding suddenness; respiratory problems can build over years. Take appropriate precautions when you turn. Safety guidelines are published in the AAW Resource Directory. Following them will help ensure that you can continue to enjoy woodturning.

From American Woodturner



**Dues Renewal or Application for Membership  
Piedmont Triad Woodturners Association**

Date \_\_\_\_\_  **NEW APPLICATION**  **RENEWAL**

Name \_\_\_\_\_ Phone \_\_\_\_\_ (Home)

Address \_\_\_\_\_ Phone \_\_\_\_\_ (Work)

\_\_\_\_\_ E Mail \_\_\_\_\_

\_\_\_\_\_ AAW membership No. \_\_\_\_\_

Membership Fee: \$24.00 per year. Dues paid In October each year. We prorate dues if you are joining at other times of the year.

Oct/Nov/Dec \$24.00; Jan/Feb/Mar \$18.00; Apr/May/Jun \$12.00; Jul/Aug/Sep \$6.00.

Please make check payable to Piedmont Triad Woodturners Association.

Mail to: Gene Briggs, 1831 Squire Davis Rd, Kernersville, NC 27284