

#### NEXT MEETING:

Tuesday, April 3rd at the Leonard Rec. Center.

#### DEMONSTRATOR:

Bill McInnis – Norfolk Island Pine Bowl

#### FUTURE DEMONSTRATORS:

May 1<sup>st</sup> – Eckess Jones - Pigtales

#### MINUTES OF March 7th MEETING:

- President Bruce Schneeman opened our meeting
- Introductions of 6 visitors were made, with 59 attendees
- Bruce asked for volunteers to assist set up and clean up
- Treasurer report was given by Gene Briggs
- Jim Yarbrough ask for contributions to Birdfest- a fund raiser for Habitat for Humanity
- Bob and Vicky reported on State Symposium progress
- Highlights of Box Elder cutting were shared
- You can call Casey if you would like to pick up some of the extra wood
- Jim Duxbury updated the demo calendar and asked for volunteer demos from our group
- Our Instant gallery was presented by John Morris, with photos by Mike Evans

We are fortunate to have as our guest demonstrator, Jim Miles from Cornelius, NC. Jim is an active member of the NC wood turners Club in Hickory NC. Jim had the great fortune of learning to turn from his father, who learned to turn from his father, who learned to turn from his father. He even has a family heirloom spindle chair that someone made. It had been modified with shorter legs at some point and bears several generations of wear that cannot be duplicated. Jim has taught classes in Davidson at the Creative Arts Exchange.

He began the evening with some show and tell of his Staved construction pieces. He assured us that it could be achieved with a no math procedure. He followed up by showing us his jigs for cutting segments and for cutting the circles. When gluing up his rings, he leaves a gap across the middle with 2 round wedges. This gives you 2 half circles. When dry, these halves can be cut or sanded to perfectly flat

and then glued together. He has a jig for turning the ring flat. If you would like to run the rings through a planer or bed sander. Guess What? There is a jig for that as well.



Moving on to the stave construction, Jim glues up straight strips of wood into a stair step pattern. After dry, these boards are cut at 15 degree into strips again. You alternate every other piece and glue up in groups of 2. Believe it or not you have just created a stave with a Chevron pattern. Or you could offset the pieces and create a Herringbone pattern. Notice how I snuck in that 15 degree comment, I just wanted to see if you were still paying attention. If you want the bowl/vase to have 12 staves, you cut each side to 15 degrees and glue up. Using the same method as mention for the rings, you can glue 6 pieces and glue the other six with a space between. Once dry, sand or plane flat and make the final glue up for a perfectly fitted circle/cylinder.



Now is the time for your creativity. What shape do you want it to end as? What pieces do you want to add for the top and/or bottom? Do the colors match? Well, the list goes

on and on. Jim chooses a Grecian form. He roughs out the exterior with a 1/2" bowl gouge. He notes when you should sand the pieces, but not tonight! Jim is quick to point out that you cannot talk with your mouth full of shavings!

Once shaped, it is time to make the inside match the outside. For this task, Jim chooses to use a termite brand ring/hook tool. Yes it does make quick work of removing the excess material. You could just see the light bulbs going off, people thinking "I gotta get me one of those!" Woodcraft, Packard's, and Craft Supplies will never know what hit them. OK, Lets get back on topic; Jim paused and explained to us how to sharpen the Ring tool with a dremel and cone shaped stone. Like all other tools, it cuts much better when it is sharp. Jim takes the time to show us how the tool is presented to the wood in a vertical position and rotated until the desired cut is achieved. With good control, you can work up from the bottom and back down again, without stopping.

He shows us how you should make your staves thick enough so to follow the golden thirds rule of design.

Time was short, so he rushed to show us how to make the open segments herringbone vase by building and cutting out the unwanted pieces, but he also shared one last secret. The material he uses for this project is man made from recycled construction material. Running out of time, Jim hung around and answered numerous one on one questions. We all learned much.

- Our raffle was back in full swing with something for everyone

Respectfully submitted, Lan Brady

\*\*\*\*\*

## JULY MEETING PLANS: ICE CREAM SOCIAL

**This is a family event – All are Welcome**

Since our regularly scheduled meeting date for July will fall on July 3<sup>rd</sup>, we are moving our July meeting back to **Saturday June 30<sup>th</sup>**. It will be at the **Woodcraft store** at Four Seasons Mall complex in Greensboro.

The entire day – from 10 a.m. - 4:30 p.m. has been reserved. Chet has about 7 lathes which will be available for us. Each member who wishes to demonstrate should bring tools and wood of your choice to do whatever individual demonstration you excel at. This could include bowls, spindles, pens, hollowing etc. Demonstrations will be coordinated later with **Jim Duxbury**. We would like a variety of techniques and examples of turning.

From 10 a.m. until about noon, members can demonstrate their skills and converse with the public. From noon until about 1 p.m. will be a break for lunch. There are a number of places throughout the Four Seasons Mall for lunch of your choice.

We will gather again at about **1:30 for the actual business meeting**. We will conduct business, have our **Show and Tell** gallery, raffle, followed by the **Ice Cream Social** with Ice Cream, Cookies and Soda.

Demonstrations and conversation will last until about 4:30 p.m. or until the Ice Cream and Cookies are gone.

If you have any questions, please drop Jim Duxbury an email at [cyberdux@bellsouth.net](mailto:cyberdux@bellsouth.net).

## NEW VIDEO PEDESTAL :

Brian Johnson had the new pedestal that houses all of our video equipment at our last meeting. Note that all the wires are contained neatly in a chase. Thanks go to Brian for all his work putting this together.



If you are willing to serve on the committee to help with setting up and taking down at our meetings, please contact Bob Muir (336.638.6012 or [rmuir2@triad.rr.com](mailto:rmuir2@triad.rr.com)).

## HABITAT REMINDER:

Remember to bring any pieces you would like to donate to Habitat Forsyth Birdfest. Jim Yarbrough will bring entry forms and some brochures about the event to our next meeting. For those who sell their work this is good way to get your name out there, as well as the club's name. The

event was changed last year to make it clear that it is a fund raiser, and not just a big party, so sales were much better than the year before. Jim was recently in the Habitat office and a staff member told him that she "always look(s) forward to our club's entries arriving!". Since we meet on May 1st, Jim could accept donations at that meeting and get them there for the sale. Anyone wanting to be entered for a prize should have their donation in at the April meeting.

### MEMBER ACCOMPLISHMENTS:

**Glenn Marceil** recently had his piece "Shocking Southwest" accepted into Associated Artists Dimensions 2007, a national juried fine arts competition and exhibition. The show is at 301 W. 4th St., Winston Salem and runs thru May 4th.



### NORTH CAROLINA WOODTURNING SYMPOSIUM:

Put the dates of **October 6, 7, & 8, 2007** on your calendar now. These are the dates for the symposium at the Greensboro Coliseum. This is shaping up to be an exciting time that you definitely don't want to miss. We have not had an opportunity to attend an event of this level in our area since the AAW in Charlotte in 2000.

### RECENT ACTIVITIES:

On Saturday February 24th several of our members met with Mike Evans to cut some box elder. More photos are on the Special Events section of our website.




---

### PHOTOS FROM NOVEMBER INSTANT GALLERY

**WHEN YOU BRING ITEMS FOR THE GALLERY, PLEASE LOG IT IN SO WE CAN PROPERLY ASSIGN CREDIT.**

**Photos by Mike Evans.** All photos are the property of PTWA and the individual woodturner. You can see the color versions by going to the **Instant Gallery of our website** <http://www.ptwoodturners.org>



Linda Michael, Pyrography



John Morris – Pine Segmented Vase



John Morris – Walnut Lidded Segmented Bowl



Ron Roe – Bubinga “Inside Out” Ornament



Bert Rau – Spalted Sycamore & Plywood Bowl



Bert Rau – Ebony, Fiberboard, Plywood & Plastic



Earl Kennedy – Candy Dish for 1 M&M



Earl Kennedy – Birdhouse (Full Size Ready for a Bird)



Bert Rau – Spalted Sycamore Flat Bowl



Earl Kennedy – Natural Edge Vase



Bob Moffett – Cherry Bowl



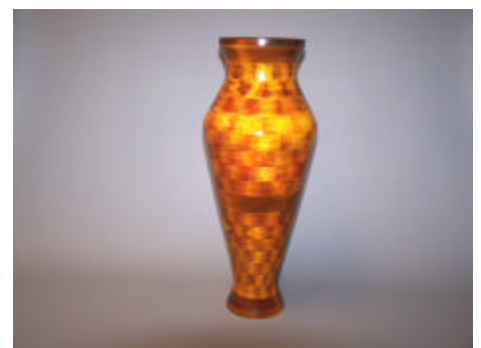
Bob Moffett – Honey Locust Bowl



Bob Moffett – Cherry Hollow Form



Bob Moffett – Walnut Hollow Form



Bruce Schneeman - Poplar Segmented Vase



Bruce Schneeman - Hickory Sapwood & Heartwood Segmented Bowl



Earl Kennedy - Hat (front view)



Earl Kennedy - Hat (side view)



Jack Johnson - Walnut Bowl



Jim Yarbrough - Pens



Jim Terry - Persimmon Natural Edge Bowl



Jim Terry - Cherry & Walnut Hollow Form



Jim Terry - Brdford Pear Salad Bowl



Jim Duxbury - Poplar Ball Cap



Jim Terry - Walnut Bowl

### CHAPTER OFFICERS


Bruce Schneeman, President 3001 Latta Dr. Summerfield, NC 27358 (336) 644-9973 <a href="mailto:taz57devil@hotmail.com">taz57devil@hotmail.com</a>	Bob Moffett, Vice President 2416 Wimbleton Circle Burlington, NC 27215 (336) 229-6141 <a href="mailto:bobm@netpath.net">bobm@netpath.net</a>	Lan Brady, Secretary 5202 Ashworth Road Greensboro, NC 27405 (336) 621-6783 <a href="mailto:lan.brady@mail.cone.com">lan.brady@mail.cone.com</a>	Gene Briggs, Treasurer 1831 Squire Davis Road Kernersville, NC 27284 (336) 869-4584 <a href="mailto:n4qbt@prodigy.net">n4qbt@prodigy.net</a>	Paige Cullen, At Large Mbr. 3608-11 East Lee Street Greensboro, NC 27406 (336) 402-7699 <a href="mailto:nighteagle317@netscape.net">nighteagle317@netscape.net</a>
------------------------------------------------------------------------------------------------------------------------------------------------------------------	----------------------------------------------------------------------------------------------------------------------------------------------------------	--------------------------------------------------------------------------------------------------------------------------------------------------------------	----------------------------------------------------------------------------------------------------------------------------------------------------------	--------------------------------------------------------------------------------------------------------------------------------------------------------------------------------

### EX OFFICIO

James Duxbury, Prog Chair 3141 Shelly Graham Drive Graham, NC 27253 (336) 227-7168 <a href="mailto:cyberdux@bellsouth.net">cyberdux@bellsouth.net</a> <a href="http://www.duxterity.com/ec">www.duxterity.com/ec</a>	Chet Greathouse, Outreach 5002 Northbend Road McCleansville, NC 27301 (336) 235-0900 <a href="mailto:ckgreat@aol.com">ckgreat@aol.com</a>	Jim Terry, Newsletter, Website 111 Anita Drive Winston-Salem, NC 27104 (336) 768-0033 <a href="mailto:jimterry@bellsouth.net">jimterry@bellsouth.net</a>	Mike Evans, Photographer 188 Rierson Road Madison, NC 27025 (336) 445-4746 <a href="mailto:mikeevanspt@yahoo.com">mikeevanspt@yahoo.com</a>	Rita Duxbury, Librarian 3141 Shelly Graham Drive Graham, NC 27253 (336) 227-7168 <a href="mailto:cyberdux@bellsouth.net">cyberdux@bellsouth.net</a>
-------------------------------------------------------------------------------------------------------------------------------------------------------------------------------------------------------------------------------------	----------------------------------------------------------------------------------------------------------------------------------------------------------	-------------------------------------------------------------------------------------------------------------------------------------------------------------------------	---------------------------------------------------------------------------------------------------------------------------------------------------------	--------------------------------------------------------------------------------------------------------------------------------------------------------------------

### MEETING LOCATION: Leonard Recreation Center ((336) 297-4889).

★ 6324 Ballinger Road, Greensboro, NC 27410-9062



**To the Leonard Recreation Center**  
 Phone: (336) 297-4889  
 Some of the signage is confusing, so be careful.

**FROM WEST OF GREENSBORO**

1. Take **I-40 E**.
2. Take exit number **213**.
3. Turn **RIGHT** onto **GUILFORD COLLEGE RD**.
4. **GUILFORD COLLEGE RD** becomes **COLLEGERD**.
5. **COLLEGERD** becomes **NEW GARDEN RD**.
6. Turn **SHARP LEFT** onto **BALLINGER RD**.
7. Leonard Recreation Center is about 1 mile on the right.

**FROM EAST OF GREENSBORO**

1. Take **I-85 S/I-40 W/US-29 S**.
2. Take the **I-40 WEST/US-220 SOUTH** exit, exit number **123**, towards **WINSTON-SALEM (US-421 N)**.
3. Merge onto **I-40 W/US-220 S**.
4. Stay straight to go onto **I-40 W**.
5. Take exit number **213**.
6. Keep **RIGHT** at the fork in the ramp.
7. Merge onto **GUILFORD COLLEGERD**.
8. **GUILFORD COLLEGERD** becomes **COLLEGERD**.
9. **COLLEGERD** becomes **NEW GARDEN RD**.
10. Turn **SHARP LEFT** onto **BALLINGER RD**.
11. Leonard Recreation Center is about 1 mile on the right.

“An accident at the lathe can happen with blinding suddenness; respiratory problems can build over years. Take appropriate precautions when you turn. Safety guidelines are published in the AAW Resource Directory. Following them will help ensure that you can continue to enjoy woodturning.

From American Woodturner

**Dues Renewal or Application for Membership  
Piedmont Triad Woodturners Association**

Date \_\_\_\_\_  **NEW APPLICATION**  **RENEWAL**

Name \_\_\_\_\_ Phone \_\_\_\_\_ (Home)

Address \_\_\_\_\_ Phone \_\_\_\_\_ (Work)

\_\_\_\_\_ E Mail \_\_\_\_\_

\_\_\_\_\_ AAW membership No. \_\_\_\_\_

Membership Fee: \$24.00 per year. Dues paid In October each year. We prorate dues if you are joining at other times of the year.  
Oct/Nov/Dec \$24.00; Jan/Feb/Mar \$18.00; Apr/May/Jun \$12.00; Jul/Aug/Sep \$6.00.

For those who desire to receive the newsletter via US Mail the dues will be:  
Oct/Nov/Dec \$30.00, Jan/Feb/Mar \$22.50, Apr/May/Jun \$15.00, Jul/Aug/Sep \$7.50.

Please make check payable to Piedmont Triad Woodturners Association.  
Mail to: Gene Briggs, 1831 Squire Davis Rd, Kernersville, NC 27284