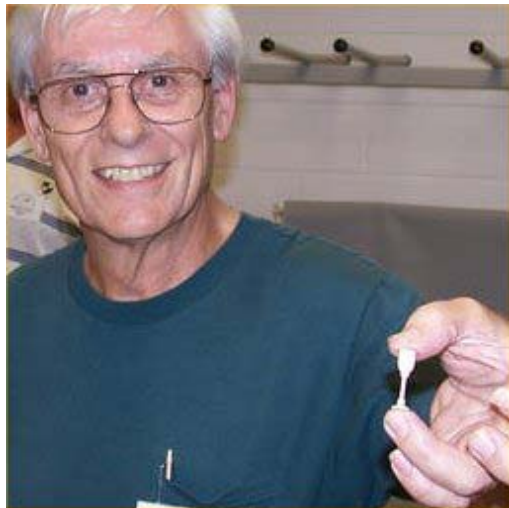


**NEXT MEETING (REGULAR LOCATION): Tuesday, Oct. 4, 6:30PM (business: 7:00)**

**PROGRAM:** Vickie Tanner will be doing a demonstration concerning the surface treatments she has been doing lately – we've all seen them in the instant gallery; now we get to really see how they are done.

**FUTURE DEMONSTRATORS:**

**November 1:** Jim Terry will be demonstrating how he made that TINY goblet he took out of his pocket last month.



**Jim Terry and the “nano” goblet**

**PROJECTS OF THE MONTH:**

October – Bias turning a la Mark St. Leger's demo.

November – You largest or smallest piece

**NOTE FROM THE PRESIDENT:**

Thank you to Gene Briggs for volunteering to take over the job of Treasurer.

Thanks to all who helped make our last meeting informative and enjoyable.

We need to receive at the October meeting all the tops that members are going to donate for the Woodturning Show and Competition. See the weblinks section for links to sites that feature tops.

See below for information about participating in the Klingspor's Woodturning Show and Competition (See also the description in the August 2005 newsletter).

Membership dues are due.

– Bob Muir

**PTWA Meeting Notes of Sept 6, 2005**

- President Bob Muir opened the meeting at 7:00pm
- We met in the non carpeted room because of the mess we were going to make
- We had 41 members and 5 guests present
- Our program Chair (Jim Barbour) updated everyone concerning upcoming meetings. Apparently some arm-twisting was needed for October!
- The NC Turning competition will be hosted by Klingspor, October 28-29
- Remember the North Carolina Wood Turners Symposium on November 5-6. It would be great if we could win the Lathe, with the new rules we stand a good chance if we turn the tops like we did last year!!!
- A tearout concern was presented by Roy Fisher
- Our Instant Gallery was presented by Bob Moffett with Mike Evans photographing

Our demo this month was a smorgasbord of skills. There was something being demonstrated for every skill level imaginable. In no particular order but just as I wandered around the room, we began with Joel Hunnicutt and the custom made scraper for bowls. We have

discussed this tool before, but it was the first time we saw it live and in action. Joel said it cut his sanding in half. After seeing it, he may be understating the savings. Joel scraped the large bowl that Roy was having trouble with tearout. The tool made lots of headway at making this a usable piece.

First up on the mini lathe was Roy Fisher with the Skew. He sure made that tool look like it cut all by itself. Did you get a good look at his collection of chisels? What do you do with a 2" Skew? I have used hatchets smaller than that thing!

Later, I found Butch Hadley on the mini lathe. He was trying out the skewji gouge that Jim Barbour had brought for demo. He was making a very nice walnut chess piece.

On the other mini lathe, John Morris was bringing many people up to speed on how to use a custom made jig/segmented table to make the beautiful open segmented pieces that the Siler City gang has become world famous for doing!

Moving around the room, I happened to catch Chet Greathouse demonstrating on the Tormek sharpening system. Using the multitude of jigs, he was able to sharpen anything that was put in front of him. I believe a person could polish a mirror with that tool.

The next station was set up with the traditional slow speed grinder with the wolverine sharpening system set up. Roy Fisher was caught showing a group of newbie's how to set it up to achieve a favorable grind on a 1/2" bowl gouge.

Roy and Pat Fisher also provided our last station. It was a great idea; they brought a TV/video combo and were playing training tape.

As I looped back around the room I found our president Bob Muir trying his luck on the big bowl blank. He was making a new cut with a bowl gouge. And, yes, Bob wins the highest bounce award when the tenon broke off. Just like skipping rocks, he got three good bounces. Don't worry, the bowl was salvaged and taken home by Bob Barrett to be completed. And shown in the gallery, hopefully!

Many other folks were busy too, but with 6 different stations, I just could not get them all. There is always next time.

Respectfully submitted, Lan Brady

**Treasurer's Report:** From Gene Briggs.

<b>Expenses:</b>	
August newsletter printing & postage	\$ 87.82
September newsletter printing & postage	\$ 58.93
<b>Income:</b>	
Library	\$ 10.00
Raffle	\$ 91.00
Dues	\$ 72.00
<b>Balance</b>	<b>\$1879.57</b>

**NEW MEMBERS & VISITORS:** The following folks joined at the Sept. meeting: Joe Schneider (Ashboro), Michael Hinshaw (Pleasant Garden), Stefan Dahl (Madison), and Brian R. Johnson (Greensboro)

**CLUB DUES ARE DUE:** See the Renewal/Application form at the end of this newsletter. Bring your dues to the October meeting and give them to Gene Briggs or mail them to him.

**INSTANT GALLERY:** As soon as you bring your piece in, find the sheet to record your name and information about the piece, and put the ID sticker on your piece.

**Having woodturning problems?** If you would like to bring pieces that you want help with (but don't necessarily want to put in the gallery), bring them to our meetings and we'll provide an opportunity to share your concerns and to receive suggestions.

**North Carolina Woodturning Show and Competition 2005:**

Show: Friday, October 28<sup>th</sup>, 9:00 am to 6:00 pm & Saturday October 29<sup>th</sup>, 9:00 am to 4:00 pm

Setup: Thursday, Oct. 27<sup>th</sup> 9:00 am to 6:00 pm & Friday, Oct 28<sup>th</sup> 7:00 am to 8:00 am Note: Setup to be complete and ready for judging at 8:00

Tear Down: Saturday, October 29<sup>th</sup> starting at 4:00 pm. Nothing may be removed prior to 4:00 pm!

**Rules for The Competition and Sale:**

1. Each Chapter will be responsible for all aspects of putting together and manning a “craft fair” type display of the works of their members for show and/or sale. All aspects include: bringing the turnings, the display, set up, tear down, handling sales including sales taxes, etc. The display area can be 10' x 10', 10' x 15', or 10' x 20'. Electricity will be available for lighting. No demos will be allowed in the display area! Your request for booth size must be in my possession by Oct 5<sup>th</sup>.
2. Your chapter may use this event as a fundraiser, i.e. you may charge each member an entry fee and/or take percentage of sales. You are writing your own rules. You determine how many pieces each member can bring, etc.
3. The competition will be broken into two parts.
  - a. A Judge will select winners and runner-ups in three divisions based on turning skill level: Novice, Intermediate, and Advanced. Prizes and ribbons will be awarded at each level. Rules are as follows:
    - i. Each member participating may submit **1 piece** for judging.
    - ii. A colored entry form will be displayed with entries to indicate level
    - iii. Judges decision is final.
  - b. All turnings on display in your booth will be included in the competition based on Categories. Ribbons will be awarded in categories to include, but not limited to: bowls, hollow forms, boxes, platters, pens, sculptures, spindles, segmented turnings, toys, etc.

**Tops for Tots:**

Again this year, we are asking turners to make and bring tops. All tops will be given to children at local hospitals, rehab groups, children's homes, etc. This is your chance to give back to the community and make a child smile! (**No CD tops please, breakage is a problem.**)

The chapter that makes the most tops per member will receive the prize of a Delta Midi Lathe. We will use a very simple formula: Number of tops divided by the number of members = TPM (Tops per Member), i.e., Chapter “A” with 20 members bringing in 100 tops will have a TPM = 5, Chapter “B” with 120 members bringing in 410 tops will have a TPM = 3.42. Chapter “A” will win! **In all cases, the children are the real winners! Lets make tops!**

Membership will be as of October 1<sup>st</sup>. Honor system applies!

**The event above is an opportunity to sell and have your work judged:** We will have a 10' by 15' Club Booth at the North Carolina Woodturning Show and Competition in Hickory (**see rule #1 above**). Please study the rules above.

At the October meeting we will determine how many pieces each member may display in our space (**see rule #2 above**).

In order to participate, you will either have to bring your items to Hickory or arrange for someone to do so. Before turning your items over to anyone, you should create an inventory of them and clearly indicate the selling price.

**Education:**

Hands On: Carolina Mountain Woodturners has a mobile lab with 10 mini lathes and all the accessories. We are planning to set up a “hands on” area with these minis. This area will be used to put tools into the general public's hands and let them feel woodturning! We will set up specific class with sign up sheets etc. All clubs will have

access to this area. Lots of volunteers will be needed to assist. These **volunteers must be members of the AAW for insurance purposes.** Demonstrations: One area will be set up for scheduled demonstrations. This will include a speaker system, video, seating, etc. Please submit suggested names of demonstrator ASAP. These suggested demonstrators may be members of your chapter, or anyone in the world that can do a good job turning wood and attract turners to the show.

Sharpening: Always a draw among woodturners is sharpening.

We will set an area just for sharpening and invite people to bring in their gouges and learn how to sharpen using the wolverine system.

**NEEDED HELP for the above show:** There are several openings in the Hands On area for leaders of sessions in turning tops, instructing kids, and turning ornaments. **Instructors must be members of the AAW for insurance purposes.**

We will also have two grinding systems set up to show people how to sharpen their turning tools. We will need volunteers to work the sharpening area. **Instructors must be members of the AAW for insurance purposes.**

We will also need two assistants in each hands-on session and assistants to operate the camera on the Main Stage.

**If you are willing to help** with any of the above, as well as, to help during the step up times, please email Bob Muir (rmuir2@triad.rr.com) or sign up at the Oct. meeting.

**OTHER WOODTURNING SHOWS/SYMPOSIA:**

- **North Carolina Woodturners Symposium**, Saturday & Sunday, November 5-6, Statesville Civic Center, Statesville, NC
- Blue Mountains International Woodturning Symposium to be held Emu Heights (approx 60kms west of Sydney) Australia on 29-30th October.
- Desert Woodturning Roundup Symposium to be held February 18 and 19, 2006 in Mesa, Arizona. <http://www.desertwoodturningroundup.com>. We invite all woodturners to attend this symposium. There will be 10 nationally and internationally known turners at this 2-day event. We will have an instant gallery, vendors, raffle, hands-on, banquet, demos, lectures and great Arizona weather. To help offset early expenses, we ask if you could please send in your registration made out to Arizona Woodturners association as soon as possible.

**Tops for St. Jude's Childrens' Hospital:** Since one of our members has a relative under treatment at St. Jude's, it has been suggested that it is appropriate that we collect tops (and other handmade toys) for patients there as well as for the North Carolina Woodturning Show and Competition.

**CONSIDERATIONS REGARDING TOPS FOR TOTS:** A general guideline is to ask yourself “Do I want my child or grandchild to play unsupervised with this top?”. Answers should be based on considering the risks of choking on the top as a whole or if it were to break apart, toxicity of the wood and/or finish, etc.

**BRING YOUR TOPS TO THE OCTOBER MEETING****COMMUNICATIONS AND GETTING TO KNOW EACH**

**OTHER:** Roy Fisher is working on a membership directory that would include names, addresses, & phone numbers. We are thinking of making it available after the due date for membership dues, e.g., at the December Holiday Dinner. Of course it can be mailed out, too. Do you want e-mail addresses to be included? Is it important to you for the directory to have photographs of the members? Do you want an indication of those that are willing to serve as mentors?

On another note: Does anyone want to receive the newsletter as an e-mail attachment? It would be in the form of an Adobe Acrobat pdf

document with a size of around 500 Kilobytes to over 1 Megabytes. The photographs would be in color. All newsletters are posted to our club website in color.

**Vacuum Pumps for sale:** Jon Cowgill has been able to acquire two more vacuum pumps from his company as surplus. He will be bringing them to the October meeting and they are for sale for \$35.00 each. He says there may be two or three others later in the fall. Please see Jon at the meeting if you have been looking for one.

**An opportunity & offer from Chet Greathouse:** We encourage your patriotism and participation to join with your fellow woodworkers and artisans here in the Piedmont Triad area. Here's how: **The Freedom Pen Project**

The Woodcraft Store in Greensboro invites you to participate in a nation-wide project to turn hand made wood pens for our men and women in uniform overseas. We have seven lathes, equipment, tools, materials and a classroom instructor to assist you in turning, finishing, and assembling as many Slim Line Pens as you would like. These must be individually wrapped and will be forwarded to our troops for distribution. Our goal is to complete 10,000 pens by the Veterans Day weekend.

We invite you to participate now through Veterans Day, November 11, at the Woodcraft Store next to CompUSA just outside the Four Seasons Mall. We will make a special push on Friday and Saturday

November 11 & 12 and hope to enlist veterans, the VFW, American Legion, local recruiters, and even scout troops to participate and spread the word about this worthwhile program.

Please call for more information and to schedule your participation at the Woodcraft store 336-235-0900. If you have any suggestions as to how you or your group can support this effort, please call us.

**We will have kits available for woodturners** who want to make the pens at home on their own equipment. I hope the Association can help with this event.

Chet Greathouse, Owner & Operator, Chris DeLong, Store Manager, 504 Four Seasons Town Center, Greensboro NC, 27407, 336-235-0900

**Manzanita Burl Turning Stock** from the mountains of Northern California. Available exclusively for members of Woodturning Associations and Clubs. Indigenous to the high elevation and volcanic soil in the forests around Mt. Lassen, this rare crimson red and gold hardwood is sure to inspire Woodturners with its unique elegance and heirloom quality. A family business since the early 1960's, we harvest only choice, turning quality Manzanita Burl, selling direct to select Woodturning Clubs, offering choice burls that turn award winning pieces. For information on prices and shipping, e-mail us at [jackburl96001@yahoo.com](mailto:jackburl96001@yahoo.com), or call us at 530-335-4279. Jack and Elaine Dickson, Burney, California

**PHOTOS FROM SEPTEMBER INSTANT GALLERY**

**Photos are courtesy of Mike Evans.** You can see the color versions by going to the **newsletter section of our website** or by visiting the website at <http://albums.photo.epson.com/j/AlbumList?u=4331334>.



Vicki Tanner walnut platter w/ burned tree



Bert Rau plate from wood rescued from Lake Superior



Bert Rau another plate from wood rescued from Lake Superior



Bert Rau small bowl (Wood from Lake Superior)



Bob Moffett closed form locust and walnut



Bob Moffett spalted maple toothpick holder



Dorothy Puls maple box



Dorothy Puls maple box inside & lid



Gene Briggs walnut bowl turned on the bias



Glenn Marceil maple, bloodwood, canary compound stave bowl



Glenn Marceil walnut, maple, lacewood compound stave bowl



Jim Terry Assorted goblets



Jerry Messick 13.25 inch diameter bowl Wood unknown



John Morris maple-poplar-walnut segmented bowl



Jim Terry ambrosia maple bowl - excellent finish



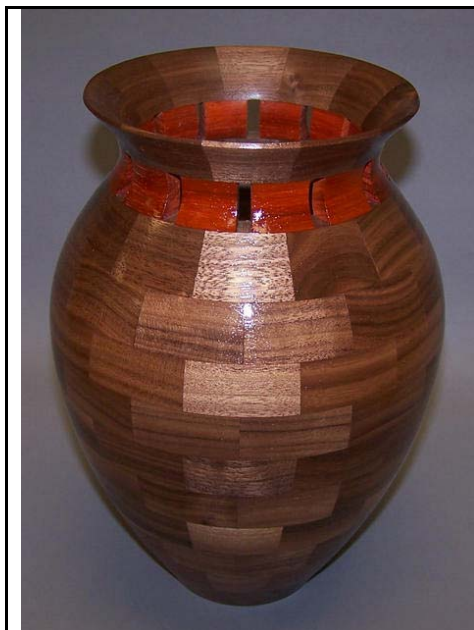
Jerry Messick cherry-sycamore kaleidoscope.



Jim Terry cherry burl



Artist & wood unknown



Joel Hunnicutt walnut vase



Joel Hunnicutt ebonized, segmented walnut vase



Jim Terry cherry crotch



John Morris pine segmented bowl



Jack Johnson walnut-cherry mill



Lan Brady birch bud vase



Lan Brady Mahogany bowl - textured



Tom Danek flowering cherry bowl



Lan Brady birch bowl

**UPCOMING WOODTURNING CLUB MEETINGS AND DEMONSTRATIONS:**

<p><b>Piedmont Triad Woodturners Association</b>  <b>First Tuesday, 7 p.m.</b>, Leonard Recreation Center, Greensboro</p> <p>October 4 – Vicki Tanner, Surface treatments  November 1 – Jim Terry, miniature goblets</p> <p><a href="http://www.piedmontcommunities.us/go/ptwa">http://www.piedmontcommunities.us/go/ptwa</a></p>	<p><b>Woodturners Guild of North Carolina</b>  <b>Second Thursday, 7pm??</b>, NCSU Craft Center</p> <p>Demonstration schedule unknown to this editor.</p> <p><a href="http://www.woodturnersguild.com/">http://www.woodturnersguild.com/</a></p>
<p><b>North Carolina Woodturners</b>  <b>Second Saturday</b>, Woodworking Shop, Hickory, NC.  Usually 1 PM (sometimes 10-4)</p> <p>Oct 10 – members: show off your hollowing tools  Nov 5-6 – NC Woodturners Symposium</p> <p><a href="http://www.geocities.com/nc_woodturners/">http://www.geocities.com/nc_woodturners/</a></p>	<p><b>Carolina Mountain Woodturners</b>  <b>Third Saturday</b> at Folk Art Center (near Asheville)  Blue Ridge Parkway just South of mile marker 382.  <b>10AM – 4PM.</b></p> <p>Oct – Marilyn Campbell, Canada  Nov – Clay Foster, Texas</p> <p><a href="http://www.carolinamountainwoodturners.org/">http://www.carolinamountainwoodturners.org/</a></p>

**Chapter officers:**

<p>Bob Muir, President  4214 Stonehenge Rd.  Greensboro, NC 27406  336-638-6012  rmuir2@triad.rr.com</p>	<p>Bob Moffett, VP  2416 Wimbledon Circle  Burlington, NC 27215  336-229-6141  bobm@netpath.net</p>	<p>Lan Brady, Secretary  5202 Ashworth Road  Greensboro, NC 27405  336-621-6783  lan.brady@mail.cone.com</p>	<p>Gene Briggs, Treasurer  1831 Squire Davis Road,  Kernersville, NC 27284  (336) 869-4584  n4qbt@prodigy.net</p>
<p>Butch Hadley, Member at Large  3400 Myrawood Dr.  Greensboro, NC 27406  336-697-9570</p>	<p>Jim Barbour, Prog Chair (ex officio)  3324 Osceola Road  Elon, NC 27244  336-584-4228  jim-barbour@triad.rr.com</p>	<p>Chet Greathouse, NL Ed. (ex officio)  5002 Northbend Road  McCleansville, NC 27301  336-235-0900  ckgreat@aol.com</p>	

**INTERESTING WEB SITES**

<http://www.piedmontcommunities.us/go/ptwa> **OUR CHAPTER'S WEB SITE**

<http://www.woodturner.org/> **THE AMERICAN ASSOCIATION OF WOODTURNERS**

AAW Galleries base page: <http://www.woodturner.org/gallery/>

AAW Members' gallery page: <http://www.woodturner.org/photopost/index.php>

AAW Members' forum: <http://www.woodturner.org/vbforum/forumdisplay.php?f=2>

AAW Members' e-mail discussion list info: <http://www.woodturner.org/community/discussion.cfm>

AAW products (videos, logo items, etc.): <http://www.woodturner.org/products/>

AAW 2005 Symposium (Overland Park, Kansas) report: <http://www.woodturner.org/sym/sym2005/symresults.htm>

Klingspor's woodworking shop web site: <http://www.woodworkingshop.com/>

Woodcraft Supply website: <http://www.woodcraft.com/>

Greensboro Woodcraft store's website: <http://www.woodcraft.com/stores/store.aspx?id=554>

Craft Supplies USA The Woodturners Catalog website: <http://www.woodturnerscatalog.com/>

Rockler Woodworking & Hardware website: <http://www.rockler.com>

**TURNING TOPS:** Here are some web links that show a variety of different top designs:

<http://www.spinning-top.de/>

<http://www.m.ehime-u.ac.jp/~tateishi/Tops/tops/alltops01.html>

<http://sandstrum.com/MYCOLLECT.HTML>

[http://www.spinningtop.de/spinning\\_top/spinning\\_top.html](http://www.spinningtop.de/spinning_top/spinning_top.html)

<http://www.toycrafter.com/tops/fingertops.htm>

<http://www.toycrafter.com/tops/flips.htm>

Website of Wood magazine: <http://www.woodmagazine.com/>

Russ Fairfield's web site: <http://www.woodturnerruss.com/>

Christian Burchard's web site (VERY DIFFERENT!): <http://www.burchardstudio.com/>

Russ Fairfield's "How to turn a pen tutorial": <http://www.woodturnerruss.com/Pen10.html>

Ken Grunke's inside-out turning how-to: <http://www.crwoodturner.com/ornaments/ornaments.pdf>

Kenn Osborne's "How to make a segmented pen tutorial": <http://www.penturners.org/content/segpen.pdf>

Ed Davidson's "How to turn a cigar pen tutorial": <http://www.penturners.org/content/CigarPenInstructions.pdf>

Jay Pickens' "How to cast polyester resin pen blanks": [http://www.penturners.org/content/PR\\_Instructions.pdf](http://www.penturners.org/content/PR_Instructions.pdf)

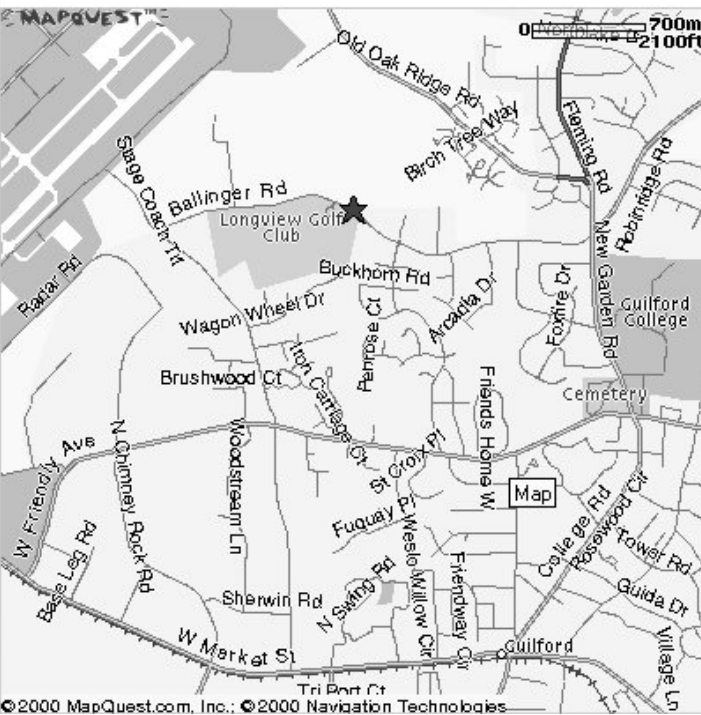
Source for epoxy and polyester resins: <http://www.artstuf.com/>

Arts and Crafts supplies: <http://www.craftsetc.com/> also see <http://www.MisterArt.com/>

**SEND YOUR FAVORITE WEBSITES TO BOB MUIR FOR INCLUSION IN THE NEWSLETTER.**

**MEETING LOCATION**

★ 6324 Ballinger Road, Greensboro, NC 27410-9062



**DRIVING DIRECTIONS**

To the Leonard Recreation Center  
 Phone: (336) 297-4889  
 Some of the signage is confusing, so be careful.  
 The Longview Golf Club no longer exists!

**FROM WEST OF GREENSBORO**

1. Take I-40 E.
2. Take exit number 213.
3. Turn RIGHT onto GUILFORD COLLEGE RD.
4. GUILFORD COLLEGE RD becomes COLLEGE RD.
5. COLLEGE RD becomes NEW GARDEN RD.
6. Turn SHARP LEFT onto BALLINGER RD.
7. Leonard Recreation Center is about 1 mile on the right.

**FROM EAST OF GREENSBORO**

1. Take I-85 S/I-40 W/US-29 S.
2. Take the I-40 WEST/US-220 SOUTH exit, exit number 123, towards WINSTON-SALEM (US-421 N).
3. Merge onto I-40 W/US-220 S.
4. Stay straight to go onto I-40 W.
5. Take the exit number 213.
6. Keep RIGHT at the fork in the ramp.
7. Merge onto GUILFORD COLLEGE RD.
8. GUILFORD COLLEGE RD becomes COLLEGE RD.
9. COLLEGE RD becomes NEW GARDEN RD.
10. Turn SHARP LEFT onto BALLINGER RD.
11. Leonard Recreation Center is about 1 mile on the right.

“An accident at the lathe can happen with blinding suddenness; respiratory problems can build over years. Take appropriate precautions when you turn. Safety guidelines are published in the AAW Resource Directory. Following them will help ensure that you can continue to enjoy woodturning.

From American Woodturner

**Dues Renewal or Application for Membership  
 Piedmont Triad Woodturners Association**

Date \_\_\_\_\_

Name \_\_\_\_\_ Phone \_\_\_\_\_ (Home)

Address \_\_\_\_\_ Phone \_\_\_\_\_ (Work)

\_\_\_\_\_ E Mail \_\_\_\_\_

\_\_\_\_\_ AAW membership No. \_\_\_\_\_

Membership Fee: \$24.00 per year. Dues paid In October each year. We prorate dues if you are joining at other times of the year.  
 Oct/Nov/Dec \$24.00; Jan/Feb/Mar \$18.00; Apr/May/Jun \$12.00; Jul/Aug/Sep \$6.00.

Please make check payable to Piedmont Triad Woodturners Association.  
 Mail to: Gene Briggs, Treas., 1831 Squire Davis Road, Kernersville, NC 27284